

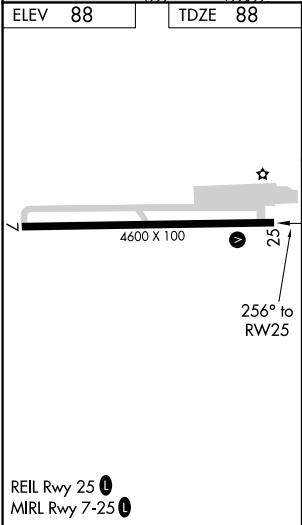
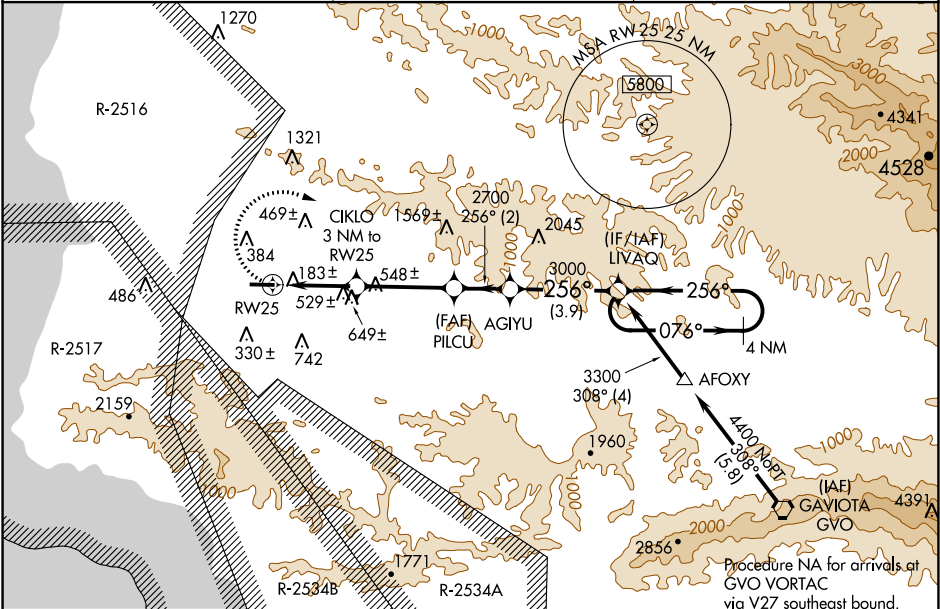
DME/DME RNP-0.3 NA. When local altimeter setting not received, use Santa Maria Public/Captain G Allan Hancock Field altimeter setting and increase all MDA 60 feet, and increase visibility LNAV and Circling Cat B ¼ mile.

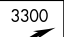

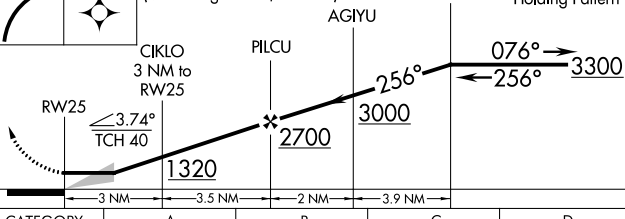
MISSED APPROACH: Climbing right turn to 3300 direct LIVAQ and hold.

AWOS-3PT
133.875

SANTA BARBARA APP CON★
124.15 327.8

UNICOM
122.7 (CTAF) 0



		VGSI and descent angle not coincident (VGSI Angle 3.25/TCH 26).				4 NM Holding Pattern	
							
CATEGORY	A		B		C		D
LNAV MDA	1000-1¼		912 (1000-1¼)		NA		
CIRCLING	1000-1¼		912 (1000-1¼)		NA		