

APP CRS	Rwy Idg	5659
320°	TDZE	313
	Apt Elev	314

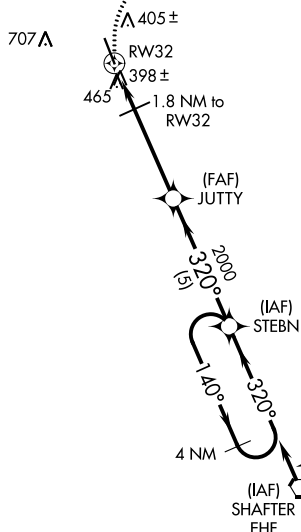
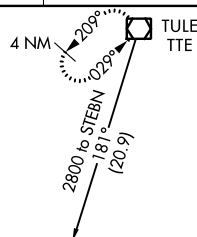
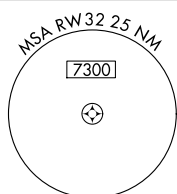
GPS RWY 32
DELANO MUNI (DLO)

T
A NA Circling not authorized Southwest of Rwy 14-32.

MISSED APPROACH: Climbing right turn to 3000 direct TTE VOR/DME and hold.

AWOS-3P
119.55

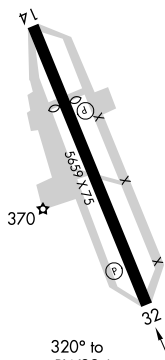
BAKERSFIELD APP CON ★
118.9

UNICOM
122.8 (CTAF) **L**

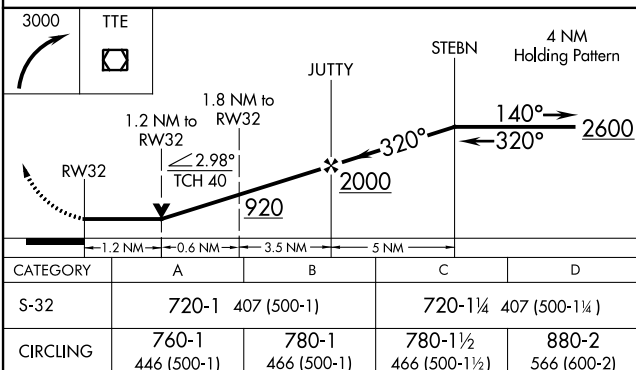
NoPT for arrivals EHF VORTAC
airway radials 123 CW 196

COREZ \triangle $\xrightarrow[2600]{069^\circ}$

ELEV 314	D	TDZE 313
----------	----------	----------



MIRL Rwy 14-32 **L**
REIL Rwy 14 and 32



DELANO MUNI (DLO)
GPS RWY 32

SW-3, 03 DEC 2020 to 31 DEC 2020