

OCEANSIDE, CALIFORNIA

RNAV (GPS) RWY 21

| | | |
|----------|-----------|------|
| APCH CRS | Rwy Idg | 6006 |
| 211° | TDZE | 78 |
| | Arpt Elev | 78 |

AL-5985 (USN)

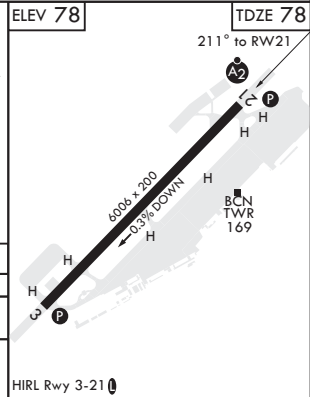
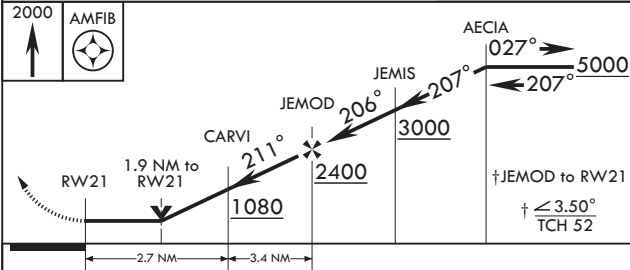
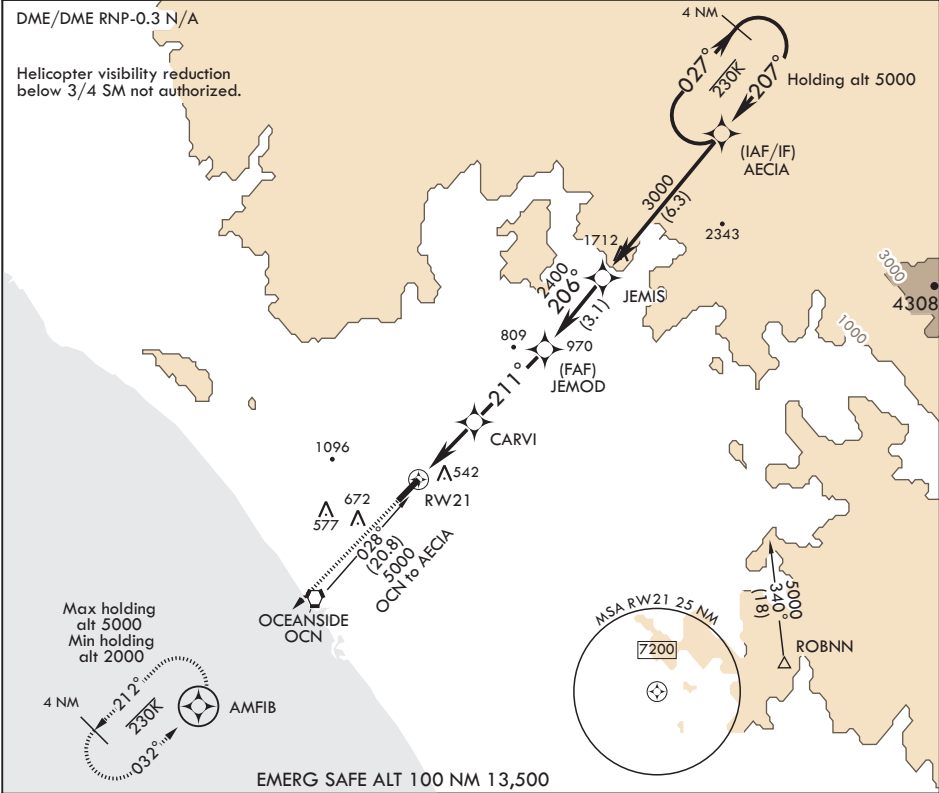
CAMP PENDLETON MCAS (MUNN FLD) (KNFG)

V * When ALS inop, increase CAT A vis to 1 mile, CAT B vis to 1 1/4 miles, CAT CD vis to 2 1/2 miles.
** Circling Rwy 3 not authorized at night when VGSi inop.



MISSED APPROACH: Climb to 2000 direct AMFIB and hold.

| | | | | | |
|--------|-----------------------|---------------|---------------|---------------|---------|
| ATIS★ | SOCAL APP CON/DEP CON | TOWER★ | GND CON | CLNC DEL | ASR/PAR |
| 285.45 | 127.3 323.0 | 128.775 340.2 | 134.675 360.2 | 134.675 271.6 | |



| CATEGORY | A | B | C | D |
|------------|--------------------------------|---------------------------------|-------------------------|---|
| LNAV MDA* | 840-3/4 762 (800-3/4) | 840-1 762 (800-1) | 840-2 762 (800-2) | |
| CIRCLING** | 1000-1 1/4 922 (1000-1 1/4) | 1180-1 1/2 1102 (1200-1 1/2) | 1400-3 1322 (1400-3) | |

OCEANSIDE, CALIFORNIA

33°18'N - 117°21'W

CAMP PENDLETON MCAS (MUNN FLD) (KNFG)

Amtd 3 03JAN19

RNAV (GPS) RWY 21

SW-3, 03 DEC 2020 to 31 DEC 2020

SW-3, 03 DEC 2020 to 31 DEC 2020