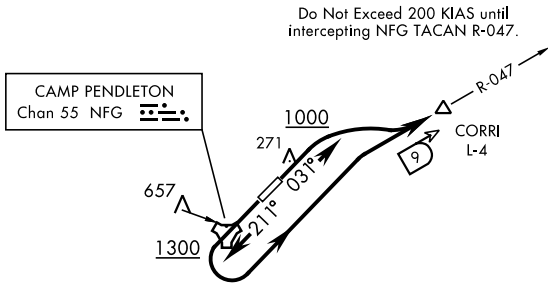


ATIS ★285.45
CLNC DEL
134.675 271.6
GND CON
134.675 360.2
CAMP PENDLETON TOWER ★
128.775 340.2
SOCAL DEP CON
127.3 323.0

SL-5985 [USN]

| Rwy | Knots | 60 | 120 | 180 | 240 | 300 | 360 |
|-----|----------|-----|-----|------|------|------|------|
| 3 | V/V(fpm) | 358 | 716 | 1074 | 1432 | 1790 | 2148 |
| 21 | V/V(fpm) | 446 | 892 | 1338 | 1784 | 2230 | 2676 |

Minimum Climb Rate to 1000



RADAR REQUIRED
NOT FOR CIVIL USE
NOT FOR USE BY CAT D/E AIRCRAFT

▼

DEPARTURE ROUTE DESCRIPTION

TAKE-OFF RWY 3: Climb on heading 031° to 1000 then climbing right turn to 3800 and intercept NFG TACAN R-047 to CORRI.

TAKE-OFF RWY 21: Climb on heading 211° to 1300 then climbing left turn to 3800 and intercept NFG TACAN R-047 to CORRI.

SW-3, 03 DEC 2020 to 31 DEC 2020

SW-3, 03 DEC 2020 to 31 DEC 2020