

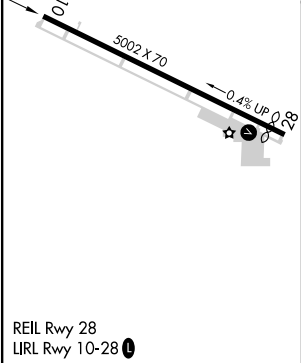
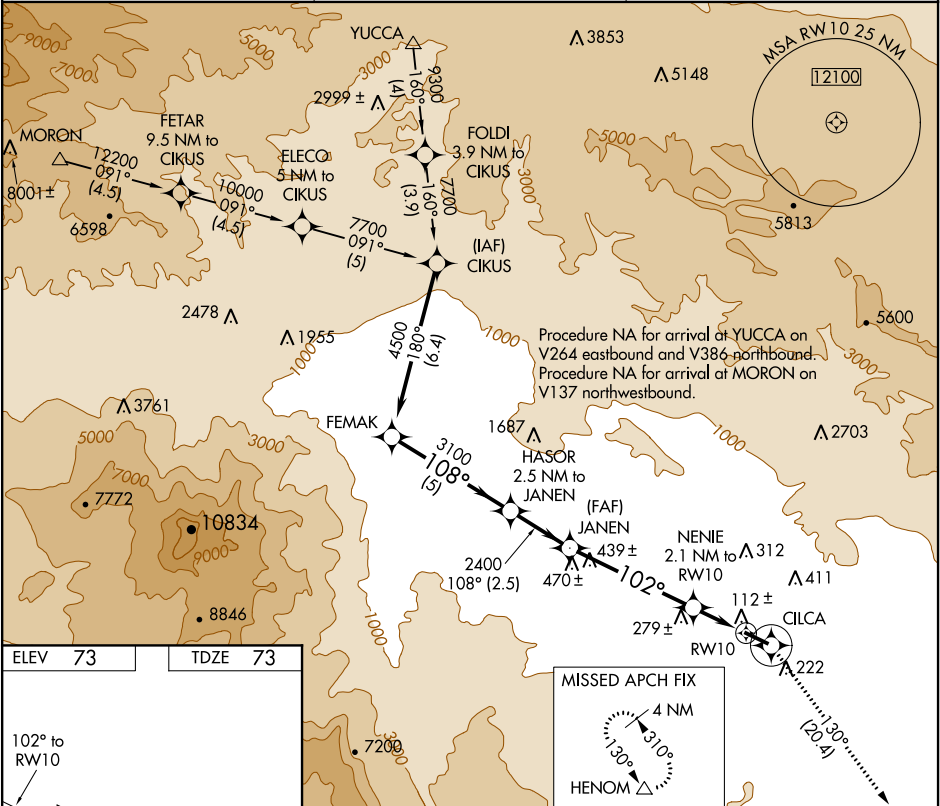
APP CRS	Rwy Idg	5002
102°	TDZE	73
	Apt Elev	73

RNAV (GPS) RWY 10

BERMUDA DUNES (UDD)

<div><div>NA</div><div>GPS or RNP-0.3 required. DME/DME RNP-0.3 NA. Use Jacqueline Cochran Rgnl altimeter setting.</div></div>	<div>MISSED APPROACH: Climb to 3700 direct CILCA and via 130° track to HENOM and hold.</div>
--	--

TRM ASOS 118.325	SOCAL APP CON* 135.275 251.1	UNICOM 122.8 (CTAF) 0
---------------------	---------------------------------	--------------------------



	FEMAK	HASOR 2.5 NM to JANEN	JANEN	NENIE 2.1 NM to RW10	CILCA	HENOM
	4500	3100	2400	800	3700	130° tr
Procedure Turn NA	5 NM	2.5 NM	4.9 NM	2.1 NM		
CATEGORY	A	B	C	D		
LNAV MDA	480-1	407 (500-1)	480-1¼ 407 (500-1¼)	NA		
CIRCLING	700-1	627 (700-1)	700-1¾ 627 (700-1¾)	NA		