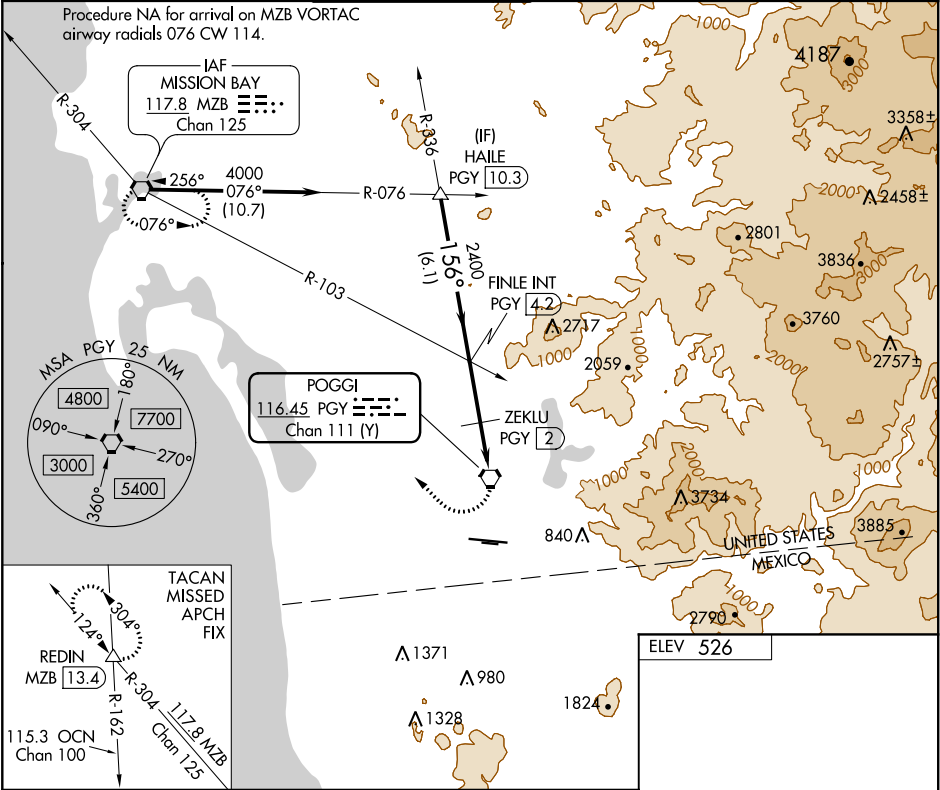


VORTAC PGY	APP CRS	Rwy Idg	N/A
116.45	156°	TDZE	N/A
Chan 111 (Y)		Apt Elev	526

VOR or TACAN-A

BROWN FIELD MUNI (SDM)

<div><div></div><div></div></div> <div>Circling NA south of Rwy 8R-26L.</div>		MISSED APPROACH: Climbing right turn 4000 to MZB VORTAC and hold. (TACAN aircraft continue on MZB VORTAC R-304 to REDIN INT/MZB VORTAC 13.4 DME and hold NW, LT, 124° inbound)			
ATIS	SOCAL APP CON	BROWN TOWER ★	GND CON	CLNC DEL	UNICOM
132.35	124.35 279.625	128.25 (CTAF) 0 225.4	124.4	124.4	122.95



<div><div>HAILE PGY 10.3</div><div>FINLE INT PGY 4.2</div><div>ZEKLU PGY 2</div><div>PGY VORTAC</div><div>4000</div><div>MZB</div></div>				
<div><div>4000</div><div>156°</div><div>2400</div><div>1380</div><div>6.1 NM</div><div>2.2 NM</div><div>2 NM</div><div></div></div>				
CATEGORY	A	B	C	D
CIRCLING	1380-2¾ 854 (900-2¾)			2260-3 1734 (1800-3)
ZEKLU FIX MINIMUMS (DME REQUIRED)				
CIRCLING	1140-2¾ 614 (700-2¾)	1340-2¾ 814 (900-2¾)	2260-3 1734 (1800-3)	

78

18

26L

26R

7972 X 150

3185 X 75

TWR
604

0.4% UP