

WAAS CH 45710 W28A	APP CRS 281°	Rwy Idg 3399 TDZE 423 Apt Elev 427
--	------------------------	---

RNAV (GPS) RWY 28R
MONTGOMERY-GIBBS EXECUTIVE (MYF)

RNP APCH.

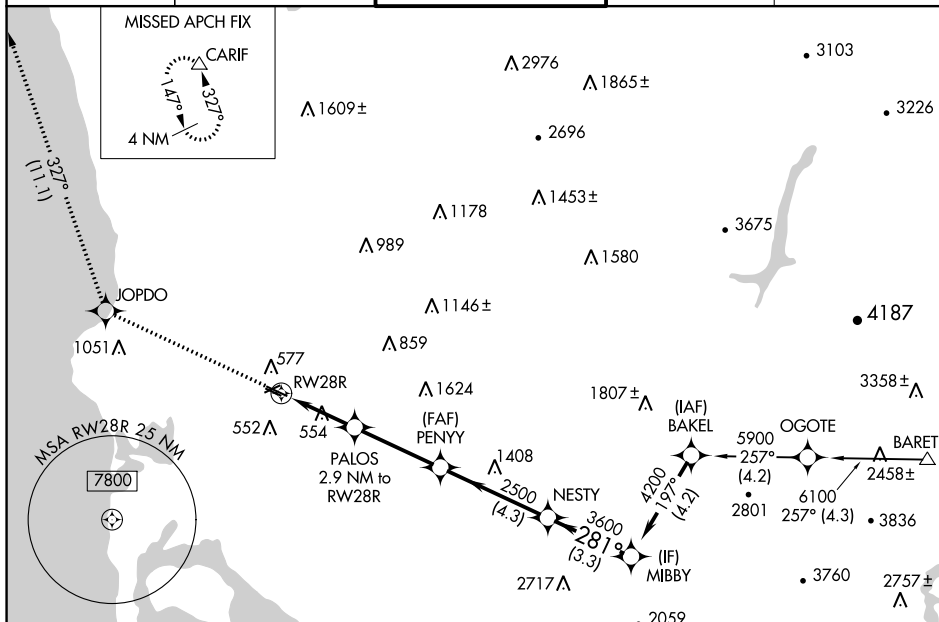
T Rwy 28R helicopter visibility reduction below $\frac{3}{4}$ SM NA.
A For uncompensated Baro-VNAV systems, LNAV/VNAV NA below -15°C or above 54°C.

MALSR

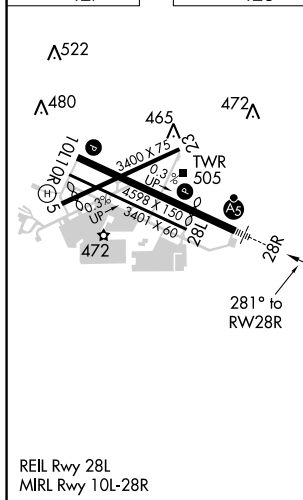


MISSED APPROACH: Climb to 3000 direct JOPDO and on track 327° to CARIF and hold.

ATIS 126.9	SOCAL APP CON 124.35 279.625	MONTGOMERY TOWER ★ 119.2 (CTAF) 0 269.4	GND CON 118.225	CLNC DEL 123.725
---------------	---------------------------------	--	--------------------	---------------------



ELEV 427		TDZE 423
----------	--	----------



3000	JOPDO	tr 327°	CARIF				
* LNAV only							
CATEGORY A B C D							
LPV	DA	673-¾	250 (300-¾)	NA			
LNAV/ VNAV	DA	750-¾	327 (400-¾)	NA			
LNAV	MDA	840-¾	417 (500-¾)	NA			
CIRCLING		920-1	493 (500-1)	NA			