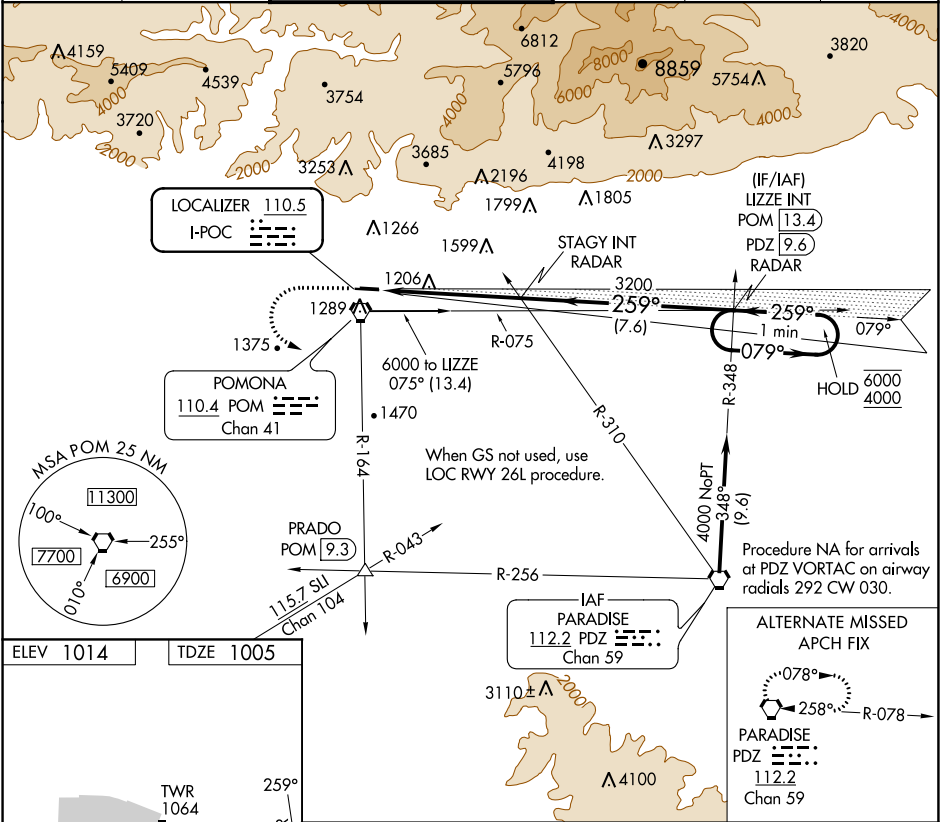


LOC I-POC 110.5	APP CRS 259°	Rwy Idg TDZE Apt Elev 4151 1005 1014
---------------------------	------------------------	--

ILS RWY 26L
BRACKETT FIELD (POC)

<p>⚠ Rwy 26L helicopter visibility reduction below 3/4 SM NA. ⚠ When local altimeter setting not received, use Ontario Intl altimeter setting and increase DA to 1364.</p>	<p>MISSED APPROACH: Climb to 2100 then climbing left turn to 4000 on POM VORTAC R-164 to PRADO INT/POM 9.3 DME.</p>
--	--

ATIS 124.4	SOCAL APP CON 125.5 318.2	BRACKETT TOWER★ RWY 8R/26L 118.2 (CTAF) RWY 8L/26R 133.3	GND CON 125.0	CLNC DEL 121.875	UNICOM 122.95
----------------------	-------------------------------------	--	-------------------------	----------------------------	-------------------------



ELEV 1014	TDZE 1005				
<p>REIL Rwy 8R and 26L MIRL Rwy 8R-26L</p>					
<p>2100 4000 PRADO VGS1 and ILS glidepath not coincident (VGS1 Angle 3.76/TCH 18).</p>					
<p>STAGY INT RADAR 3200 5.2 NM</p>		<p>LIZZE INT PDZ 9.6 RADAR 7.6 NM</p>		<p>One Minute Holding Pattern 079° → 6000 ← 259° 4000 *at DTHR; 60 at Rwy end. GS 3.92° *TCH 20</p>	
CATEGORY	A	B	C	D	
S-ILS 26L	1332-1	327 (400-1)	NA		

SW-3, 03 DEC 2020 to 31 DEC 2020

SW-3, 03 DEC 2020 to 31 DEC 2020