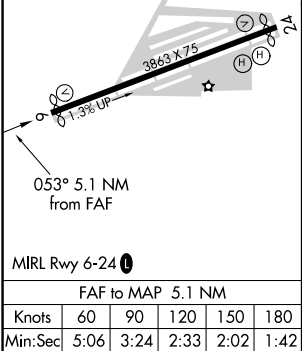
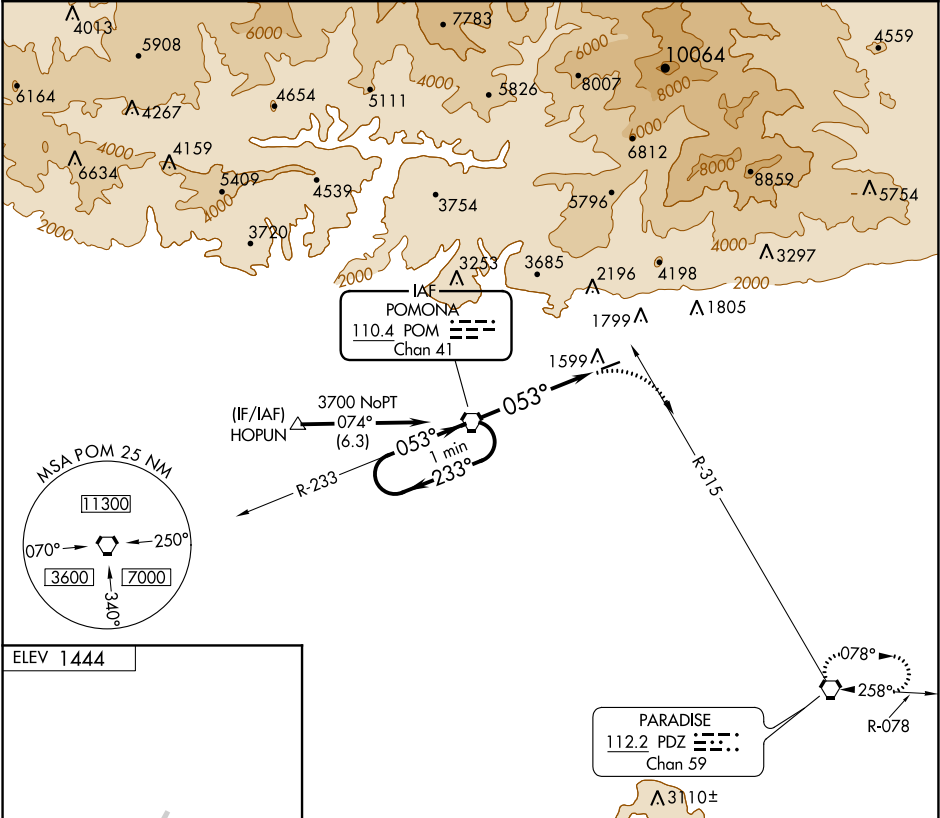


VORTAC POM	APP CRS	Rwy Idg	N/A
<b>110.4</b>	<b>053°</b>	TDZE	N/A
Chan 41		Apt Elev	<b>1444</b>

VOR-A  
CABLE (CCB)

<b>NA</b> Circling NA northwest of Rwy 6-24. Procedure NA at night. When local altimeter setting not received, use Ontario altimeter setting and increase all MDA 100 feet and all visibilities ½ SM. Rwy 24 helicopter visibility reduction below 1 SM NA.	MISSED APPROACH: Climbing right turn to 4000 via heading 105° and PDZ R-315 to PDZ VORTAC and hold.
--	---

AWOS-3P <b>119.525</b>	SOCAL APP CON <b>125.5 349.0</b>	UNICOM <b>123.0 (CTAF) 0</b>
---------------------------	-------------------------------------	---------------------------------



VGSI and descent angles not coincident ( VGSI Angle 4.00/ TCH 34 ).			
One Minute Holding Pattern		4000 hdg 105°	PDZ R-315
POM VORTAC		PDZ	
3700 ← 233° 053° →		POM 5.1	
4.22° TCH 40		5.1 NM	
CATEGORY	A	B	C
☑ CIRCLING	2240-1	796 (800-1)	2240-2¼ 796 (800-2¼ )
			NA