

WAAS CH 61125 W11A	APP CRS 114°	Rwy Idg TDZE 96 Apt Elev 103	4460
--	------------------------	--	-------------

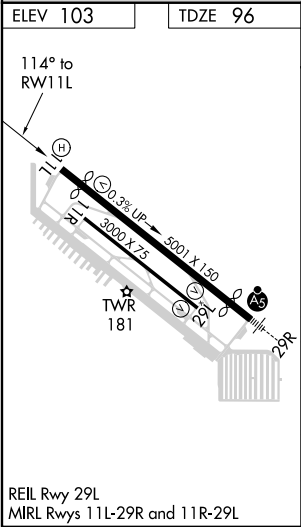
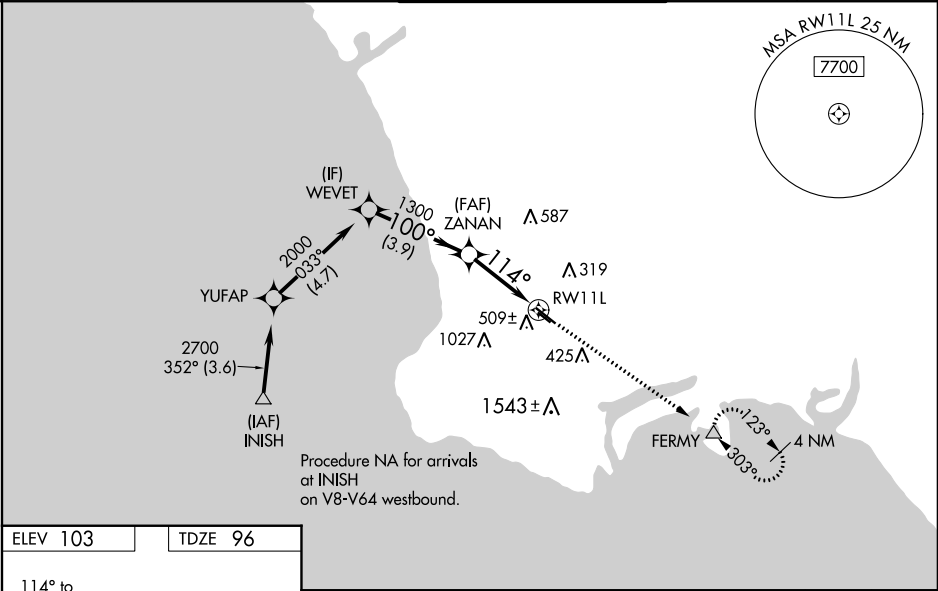
RNAV (GPS) RWY 11L

ZAMPERINI FIELD (TOA)

⚠ For uncompensated Baro-VNAV systems, LNAV/VNAV NA below 3°C (38°F) or above 54°C (130°F). Circling NA southwest of Rwy 11R-29L. Baro-VNAV and VDP NA when using Los Angeles Intl altimeter setting. DME/DME RNP-0.3 NA. When local altimeter setting not received, except for operators with approved weather reporting service, use Los Angeles Intl altimeter setting: increase LPV DA to 390 feet and LNAV/VNAV DA to 714 feet and all MDA 40 feet; increase LNAV/VNAV all Cats visibility, LNAV Cat C visibility and Circling Cat C visibility ½ SM. Rwy 11L helicopter visibility reduction below ¾ SM NA.

MISSED APPROACH: Climb to 2700 direct FERMΥ and hold, continue climb-in-hold to 2700.

ATIS 125.6	SOCAL APP CON 124.3 363.2 (Rwys 11L, 11R) 127.2 269.6 (Rwys 29L, 29R)	TORRANCE TOWER★ 133.075 257.8 (NORTH) 124.0 (CTAF) 0 257.8 (SOUTH)	GND CON 120.9	UNICOM 122.95
----------------------	---	---	-------------------------	-------------------------



VGSI and RNAV glidepath not coincident (VGSI Angle 3.50/TCH 10).				2700	FERMΥ
WEVET				↑	△
ZANAN				*LNAV only.	
2000				114°	
GP 3.43°				1300	
TCH 59				*1.5 NM to RWY 11L	
3.9 NM				RWY 11L	
1.7 NM				1.5 NM	
CATEGORY	A	B	C	D	
LPV DA	366-7⁄8 270 (300-7⁄8)			NA	
LNAV/VNAV DA	690-13⁄4 594 (600-13⁄4)			NA	
LNAV MDA	640-1	544 (600-1)	640-15⁄8 544 (600-15⁄8)	NA	
Ⓢ CIRCLING	640-1 537 (600-1)	680-1 577 (600-1)	680-15⁄8 577 (600-15⁄8)	NA	