

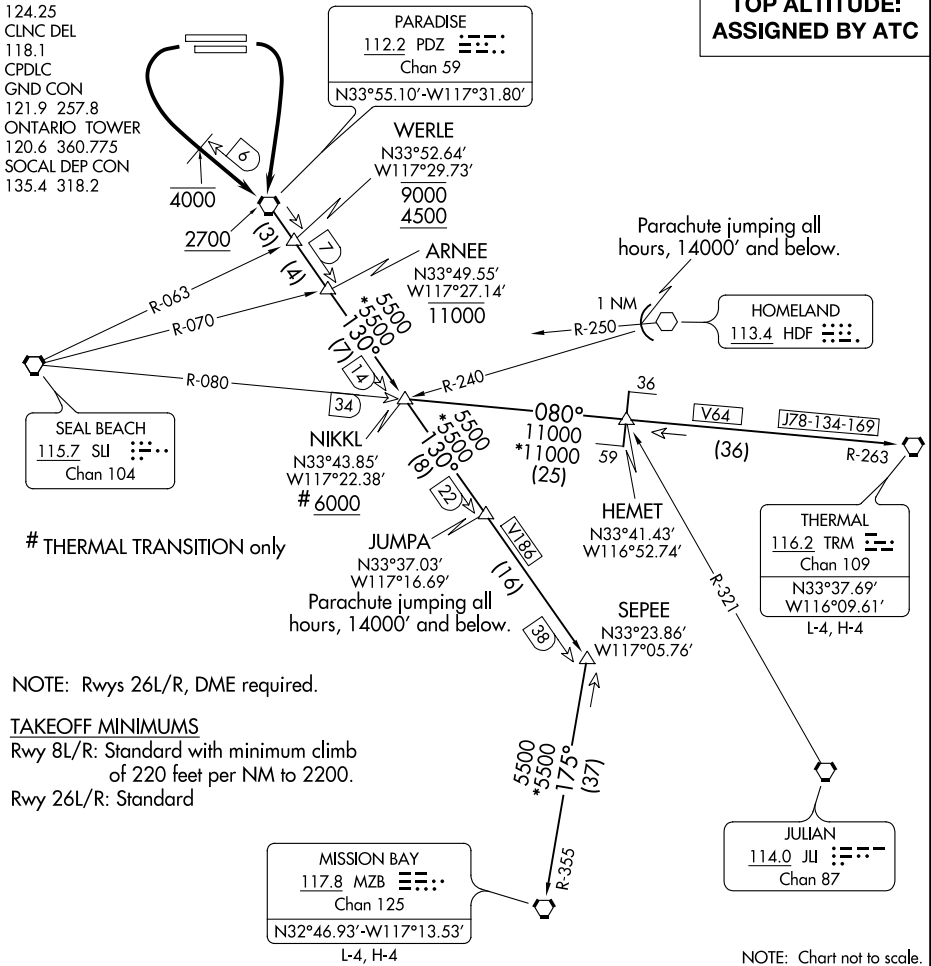
NIKKL ONE DEPARTURE

AL-965 (FAA)

ONTARIO INTL (ONT)  
ONTARIO, CALIFORNIA

D-ATIS  
124.25  
CLNC DEL  
118.1  
CPDLC  
GND CON  
121.9 257.8  
ONTARIO TOWER  
120.6 360.775  
SOCAL DEP CON  
135.4 318.2

**TOP ALTITUDE:  
ASSIGNED BY ATC**



# THERMAL TRANSITION only

NOTE: Rwy 26L/R, DME required.

TAKEOFF MINIMUMS

Rwy 8L/R: Standard with minimum climb  
of 220 feet per NM to 2200.

Rwy 26L/R: Standard

DEPARTURE ROUTE DESCRIPTION

TAKEOFF RUNWAYS 8L/R: Climbing right turn direct PDZ VORTAC. Thence. . .

TAKEOFF RUNWAYS 26L/R: Climbing left turn direct PDZ VORTAC, cross 6 DME  
northwest of PDZ VORTAC at or below 4000'. Thence. . .

. . . on (assigned transition) or (assigned route). Cross PDZ VORTAC at or above 2700.  
Expect filed altitude 10 minutes after departure.

MISSION BAY TRANSITION (NIKKL1.MZB): From over PDZ VORTAC on PDZ R-130  
and MZB R-355 to MZB VORTAC.

THERMAL TRANSITION (NIKKL1.TRM): From over PDZ VORTAC on PDZ R-130,  
SU R-080 and TRM R-263 to TRM VORTAC.

NIKKL ONE DEPARTURE

(NIKKL1.PDZ) 26MAY16

ONTARIO, CALIFORNIA  
ONTARIO INTL (ONT)