

LOS ALAMITOS, CALIFORNIA

RNAV (GPS) RWY 22L

APCH CRS 223°	Rwy Idg 8001 TDZE 35 Arpt Elev 35
-------------------------	--

AL-953 (USA)

LOS ALAMITOS AAF (KSLI)

T * When ALS inop, increase CAT D vis to 1 mile.
A ** When ALS inop using SANTA ANA altimeter
 NA setting, increase CAT D vis to 1 1/8 mile.
 *** Circling not authorized N of Rwy 4L-22R.

SALS

MISSED APPROACH: Climb to 500 then climbing left turn to 2100 direct ALBAS and hold.

ATIS★
118.875 379.975

SOCAL APP CON
125.35 316.125

TOWER★
123.85 251.15

GND CON
126.95 257.95

ASR/PAR

DME/DME RNP 0.3 N/A.

When Los Alamitos altimeter setting not available, use Santa Ana altimeter setting.

VDP NA when using Santa Ana altimeter setting.

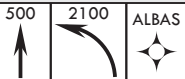
Procedure NA for arrivals
on POM VORTAC airway R-112
CW R-254.

473

3035

MSA RV22L 25 NM

7700

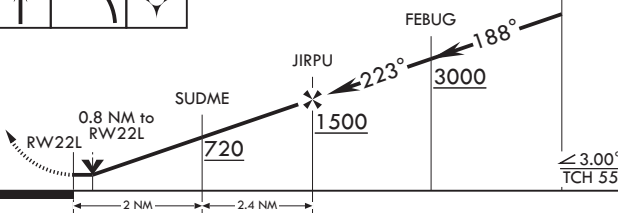


VGSI and descent angles not coincident.

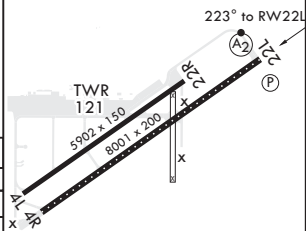
VORTAC

ELEV 35

TDZE 35



CATEGORY	A	B	C	D
RNAV MDA*	380-3/4	345	(400-3/4)	
C CIRCLING***	440-1 405 (500-1)	500-1 465 (500-1)	560-1 1/2 525 (600-1 1/2)	680-2 645 (700-2)
SANTA ANA ALTIMETER SETTING MINIMUMS				
RNAV MDA**	420-3/4	385 (400-3/4)	420-7/8	385 (400-7/8)
C CIRCLING***	480-1 445 (500-1)	540-1 505 (600-1)	600-1 1/2 565 (600-1 1/2)	720-2 685 (700-2)



LOS ALAMITOS, CALIFORNIA

33°47'N - 118°03'W

LOS ALAMITOS AAF (KSLI)

Amdt 1 07DEC17

RNAV (GPS) RWY 22L

SW-3, 03 DEC 2020 to 31 DEC 2020

SW-3, 03 DEC 2020 to 31 DEC 2020