

OXNARD, CALIFORNIA

RNAV (GPS) RWY 21

APCH CRS	Rwy Idg	11,102
212°	TDZE	13
	Arpt Elev	13

AL-925 (USN)

POINT MUGU NAS (NAVAL BASE VENTURA CO) (KNTD)

⚠ * When ALS inop increase CAT ABCD vis to 7/8 mile.
** When ALS inop, increase CAT AB vis to 1 mile; CAT CD vis to 1 1/8 miles.
*** Circling not authorized E of Rwy 3-21

MAISR

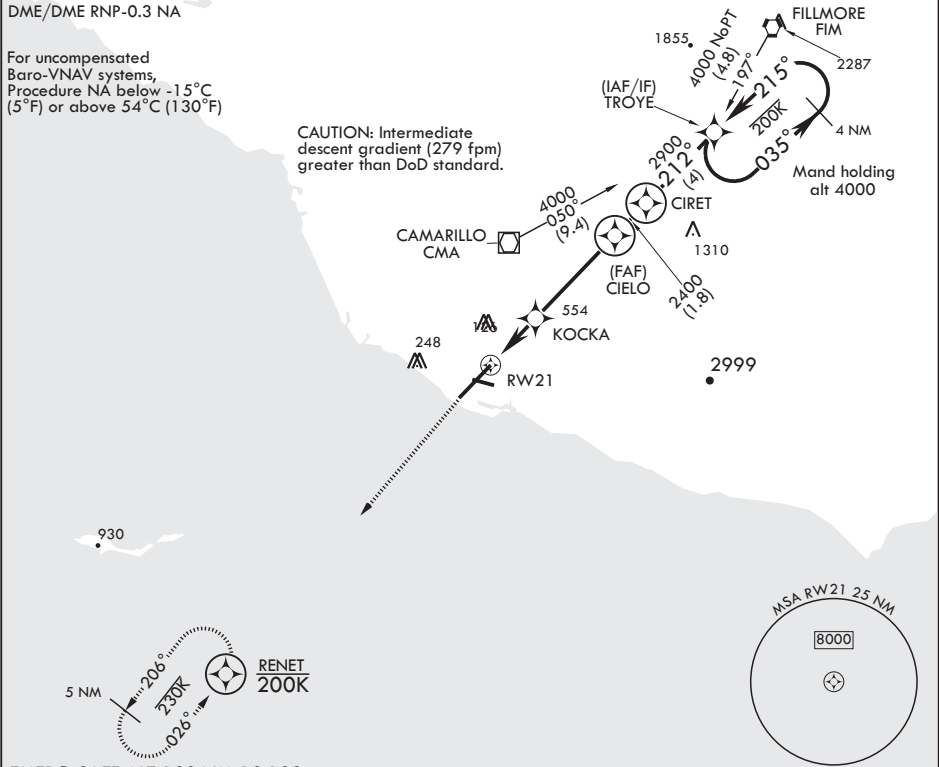
MISSED APPROACH: Climb to 500 then climbing left turn to 2600 direct RENET and hold.

ATIS★ 125.55 363.05	APP CON/DEP CON 128.65 307.275	TOWER★ 124.85 290.375	GND CON 121.6 360.2	CLNC DEL 120.75 279.55	ASR/PAR
------------------------	-----------------------------------	--------------------------	------------------------	---------------------------	---------

DME/DME RNP-0.3 NA

For uncompensated
Baro-VNAV systems,
Procedure NA below -15°C
(5°F) or above 54°C (130°F)

CAUTION: Intermediate
descent gradient (279 fpm)
greater than DoD standard.



EMERG SAFE ALT 100 NM 12,100

500

2600

RENET

† LNAV only

TROYE

035°

4000

CIRET

212°

2900

CIELO

215°

4000

KOCKA

2400

RW21

880†

GP 3.06°

TCH 46

2.6 NM

4.6 NM

CATEGORY	A	B	C	D
LNAV/VNAV DA*	289-1/2	276	(300-1/2)	
LNAV MDA**	420-1/2 407	(500-1/2)	420-3/4 407	(500-3/4)
CIRCLING***	440-1 427 (500-1)	480-1 467 (500-1)	480-1 1/2 467 (500-1 1/2)	580-2 567 (600-2)

ELEV 13

TDZE 13

212° to RW21

26

102

115

122

157

5502 x 200

125

122

HIRL all Rwys

OXNARD, CALIFORNIA

34°07'N - 119°07'W POINT MUGU NAS (NAVAL BASE VENTURA CO) (KNTD)

Amtdr 4 14SEP17

RNAV (GPS) RWY 21

SW-3, 03 DEC 2020 to 31 DEC 2020

SW-3, 03 DEC 2020 to 31 DEC 2020