

TACAN NTD Chan 43	APCH CRS 216°	Rwy Idg 11,102 TDZE 13 Arpt Elev 13
----------------------	------------------	---

JAL-925 [USN]

# HI-TACAN RWY 21

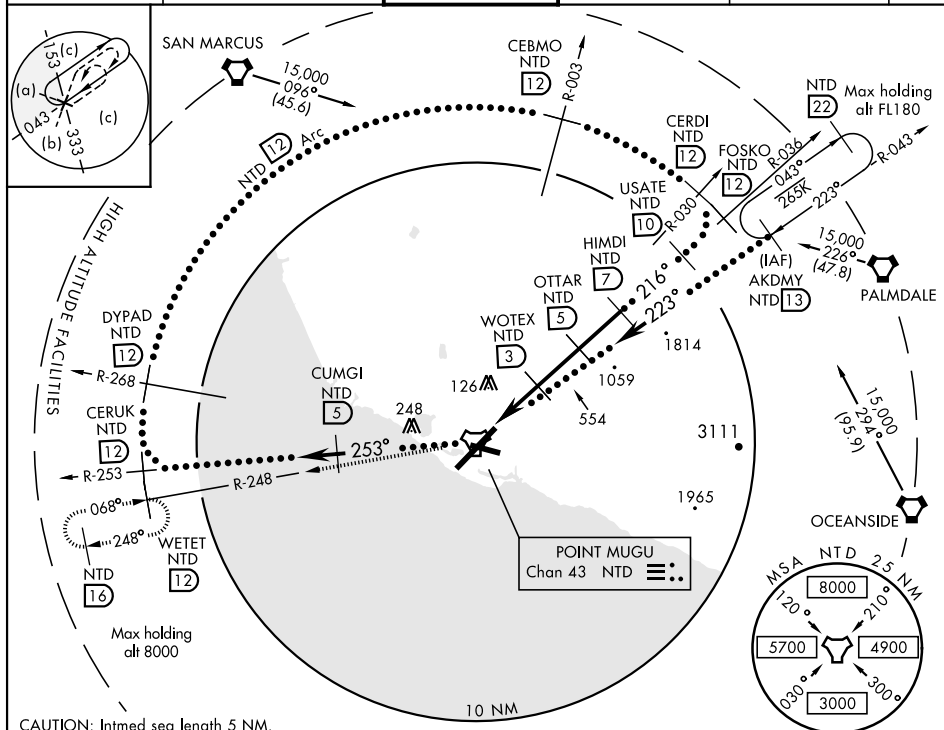
POINT MUGU NAS (NAVAL BASE VENTURA CO) (KNTD)

▲ \* When ALS inop, increase CAT CDE vis to 1½ miles.  
 \*\* Circling not authorized E of Rwy 3-21.



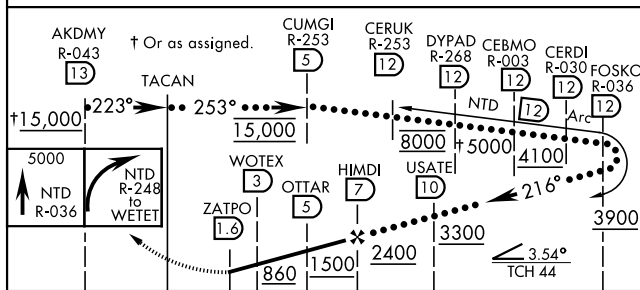
MISSED APPROACH: Climb to 5000 via NTD TACAN R-036 to NTD, then via NTD R-248 to WETET and hold, continue climb-in-hold to 5000.

ATIS ★ 125.55 363.05	POINT MUGU APP CON 128.65 307.275	POINT MUGU TOWER★ 124.85 290.375	GND CON 121.6 360.2	CLNC DEL 120.75 279.55	ASR/ PAR
-------------------------	--------------------------------------	-------------------------------------	------------------------	---------------------------	-------------



CAUTION: Intrmd seg length 5 NM.

EMERG SAFE ALT 100 NM 12,100



CATEGORY	C	D	E
S-21*	420-¾	407 (500-¾)	
CIRCLING **	480-1½ 467 (500-1½)	580-2 567 (600-2)	860-3 847 (900-3)

