

SAN DIEGO, CALIFORNIA

RNAV (GPS) RWY 24R

WAAS CH 61450 W24B	APCH CRS 243°	Rwy Ldg 12,000 TDZE 475 Arpt Elev 477
--------------------------	------------------	---

AL-903 [USN]

MIRAMAR MCAS (JOE FOSS FLD) (KNKX)

DME/DME RNP-0.3 NA.

T * When ALS inop, increase CAT ABCD vis to $\frac{3}{4}$ mile.
 ** When ALS inop, increase CAT ABCD vis to $\frac{3}{4}$ mile.
 *** When ALS inop, increase CAT AB vis to 1 mile,
 CAT CD vis to 2 miles.

ALSF-1

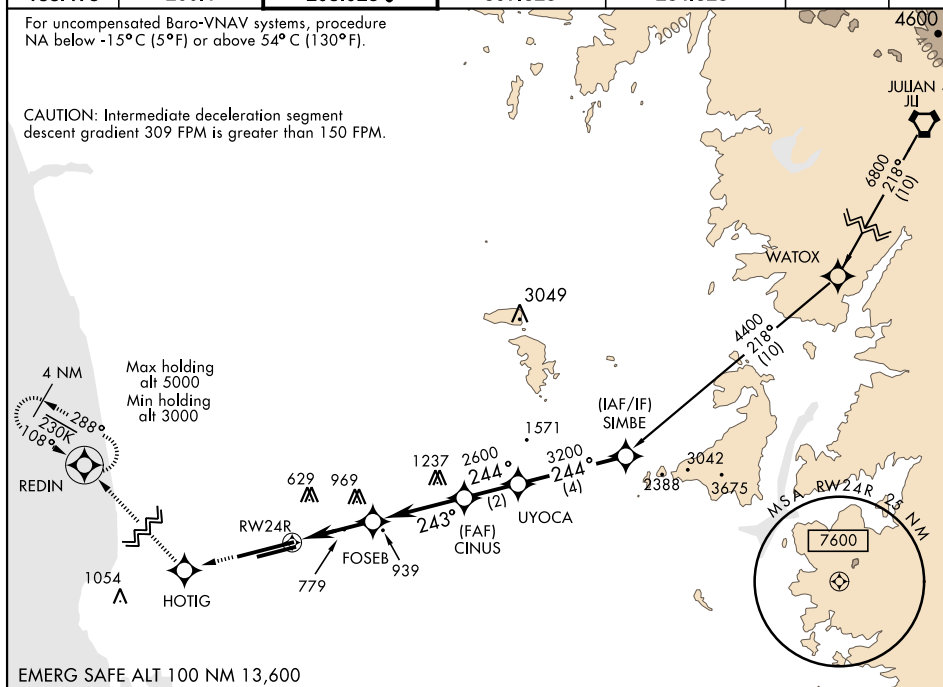


MISSED APPROACH: Climb to 3000 direct HOTIG, 288° track to REDIN and hold.

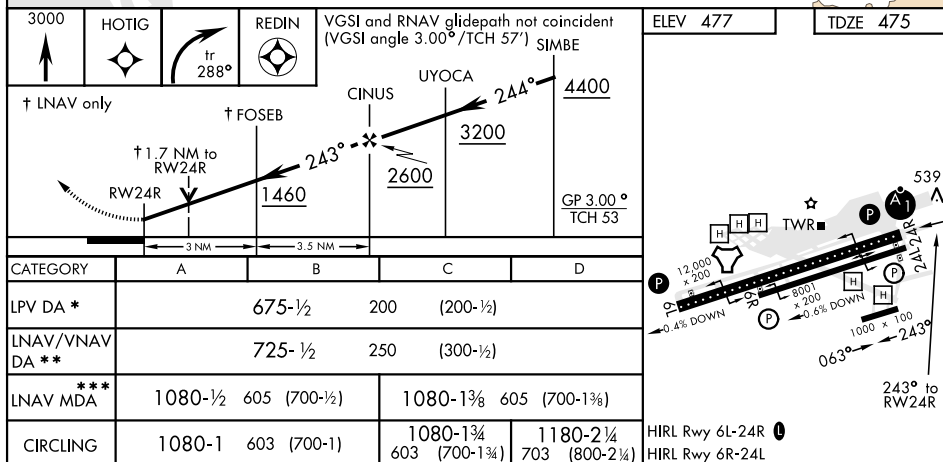
ATIS ★	SOCAL APP CON	FOSS TOWER ★	GND CON	CLNC DEL	LA CENTER	ASR/ PAR
352.0	132.2	135.2	128.625	125.975		
133.475	269.1	298.925 0	307.325	254.325	291.7	

For uncompensated Baro-VNAV systems, procedure NA below -15°C (5°F) or above 54°C (130°F).

CAUTION: Intermediate deceleration segment descent gradient 309 FPM is greater than 150 FPM.



EMERG SAFE ALT 100 NM 13,600



SAN DIEGO, CALIFORNIA

32°52'N-117°09'W

MIRAMAR MCAS (JOE FOSS FLD) (KNKX)

Amdt 3 13SEP18

RNAV (GPS) RWY 24R