

APP CRS	Rwy Idg	6013
252°	TDZE	77
	Apt Elev	77

RNAV (GPS) Y RWY 26

CAMARILLO (CMA)

⚠

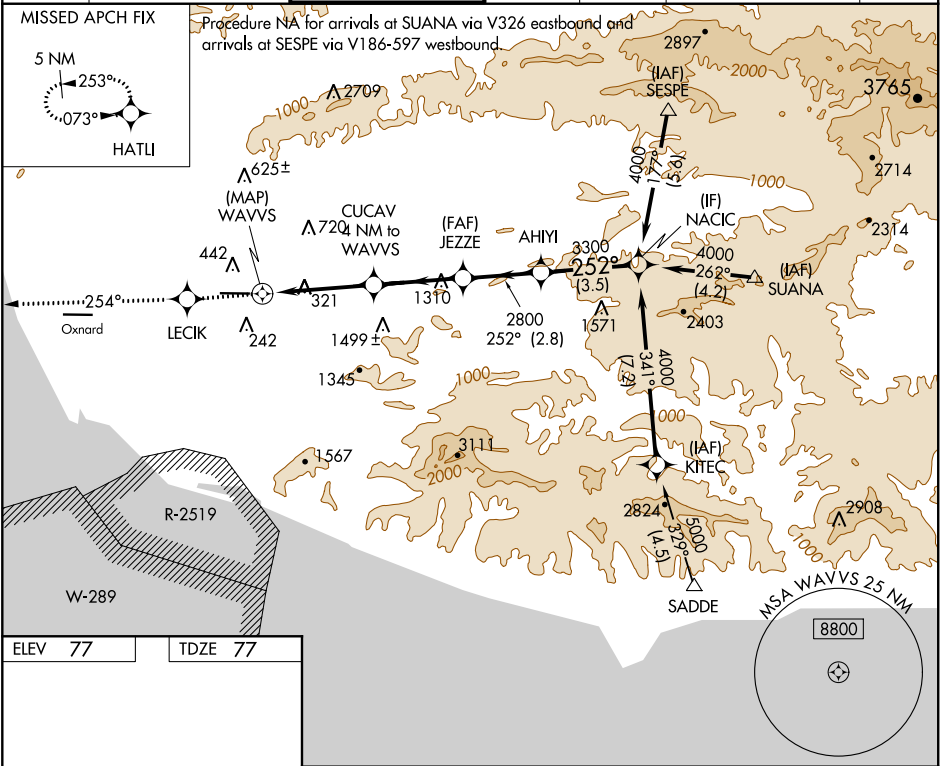
Circling NA north of Rwy 8-26. DME/DME RNP-0.3 NA.

⚠

If local altimeter setting not received, use Oxnard altimeter setting and increase all MDAs 20 feet. VDP NA when using Oxnard altimeter setting.

MISSED APPROACH: Climb to 3000 direct LECIK and via 254° track to HATU and hold.

ATIS	POINT MUGU APP CON	CAMARILLO TOWER	GND CON	CLNC DEL	POINT MUGU CLNC DEL	UNICOM
126.025	124.7 335.5	128.2 (CTAF) 0 269.4	121.8	121.8	120.75 279.55	122.95



ELEV	77	TDZE	77
------	----	------	----

