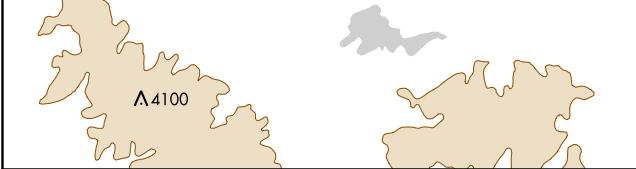
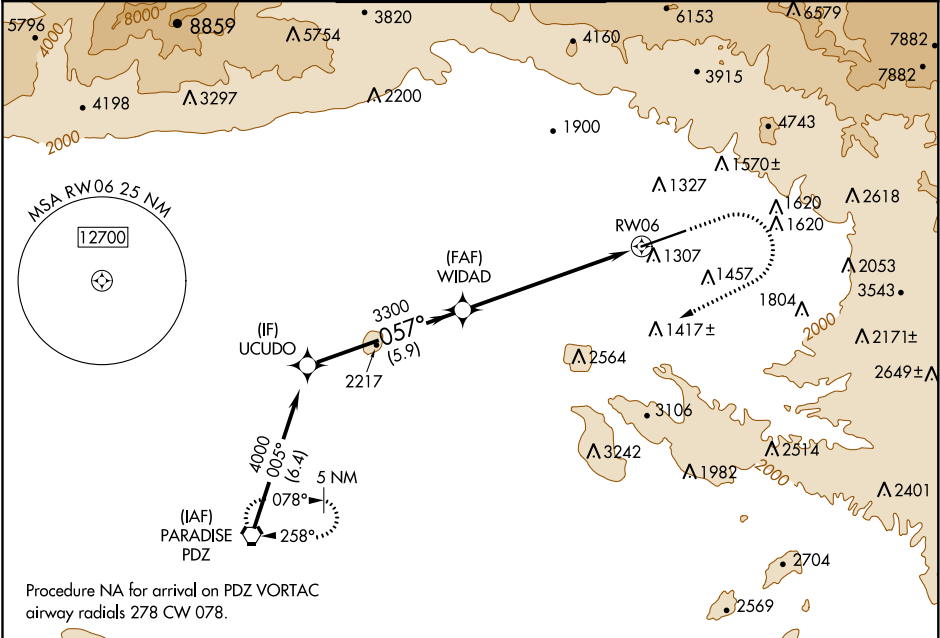


APP CRS	Rwy Idg	10000
057°	TDZE	1103
	Apt Elev	1159

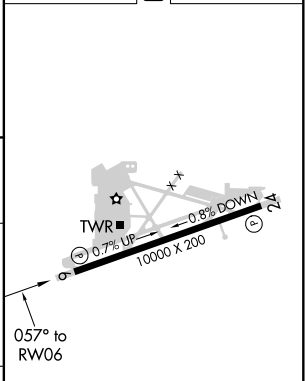
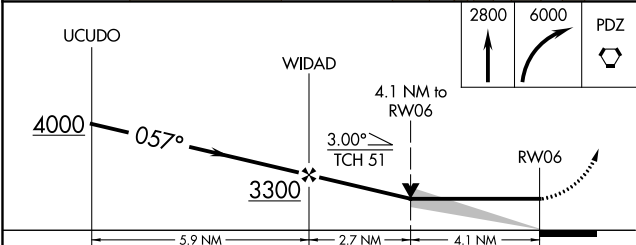
RNAV (GPS) Y RWY 6
SAN BERNARDINO INTL (SBD)

RNP APCH	MISSED APPROACH: Climb to 2800 then climbing right turn to 6000 direct PDZ VORTAC and hold, continue climb-in-hold to 6000.
Circling NA northwest of Rwy 6-24. When local altimeter setting not received, use Ontario altimeter setting and increase all MDA 80 feet.	

ATIS 124.175	SOCAL APP CON 127.0 318.2	SAN BERNARDINO TOWER ★ 119.45 (CTAF) 0	GND CON 121.8	UNICOM 122.975
-----------------	------------------------------	---	------------------	-------------------



ELEV 1159	TDZE 1103
-----------	-----------



CATEGORY	A	B	C	D
LNNAV MDA	2460-1¼ 1357 (1400-1¼)	2460-1½ 1357 (1400-1½)	2460-3 1357 (1400-3)	
CIRCLING	2460-1¼ 1301 (1400-1¼)	2460-1½ 1301 (1400-1½)	2460-3 1301 (1400-3)	2640-3 1481 (1500-3)