

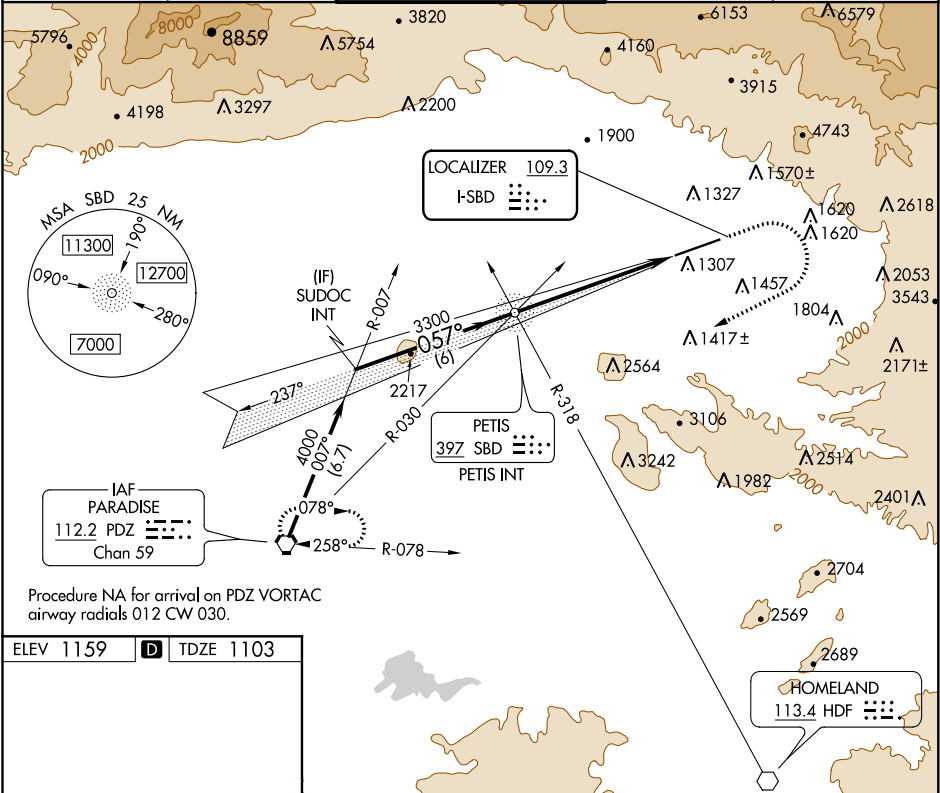
LOC I-SBD 109.3	APP CRS 057°	Rwy ldg 10000 TDZE 1103 Apt Elev 1159
---------------------------	------------------------	------------------------------------------------------------------

LOC Y RWY 6
SAN BERNARDINO INTL (SBD)

⚠ Circling NA northwest of Rwy 6-24. When local altimeter not received, use Ontario altimeter setting and increase all MDA 80 feet; increase S-LOC Cat B and Circling Cat B visibility ¼ SM.

MISSED APPROACH: Climb to 2700 then climbing right turn to 6000 direct PDZ VORTAC and hold, continue climb-in-hold to 6000.

ATIS 124.175	SOCAL APP CON 127.0 318.2	SAN BERNARDINO TOWER ★ 119.45 (CTAF) 0	GND CON 121.8	UNICOM 122.975
------------------------	-------------------------------------	--------------------------------------------------	-------------------------	--------------------------



ELEV 1159	D	TDZE 1103
HIRL Rwy 6-24 0 REIL Rwy 6 and 24 0		
FAF to MAP 6.1 NM		
Knots	60	90 120 150 180
Min:Sec	6:06	4:04 3:03 2:26 2:02

SUDOC INT		VGSI and descent angles not coincident (VGSI Angle 3.00/TCH 52).		2700	6000	PDZ
4000		057°		3300		3.33° TCH 52
6 NM		6.1 NM				
CATEGORY	A	B	C	D		
S-6	2020-1¼	917 (900-1¼)	2060-3	957 (1000-3)		
C CIRCLING	2020-1¼	861 (900-1¼)	2060-3 901 (1000-3)	2640-3 1481 (1500-3)		