


APP CRS	Rwy Idg	<b>5005</b>
<b>270°</b>	TDZE	<b>956</b>
	Apt Elev	<b>983</b>

RNAV (GPS) RWY 29  
NEEDLES (EED)

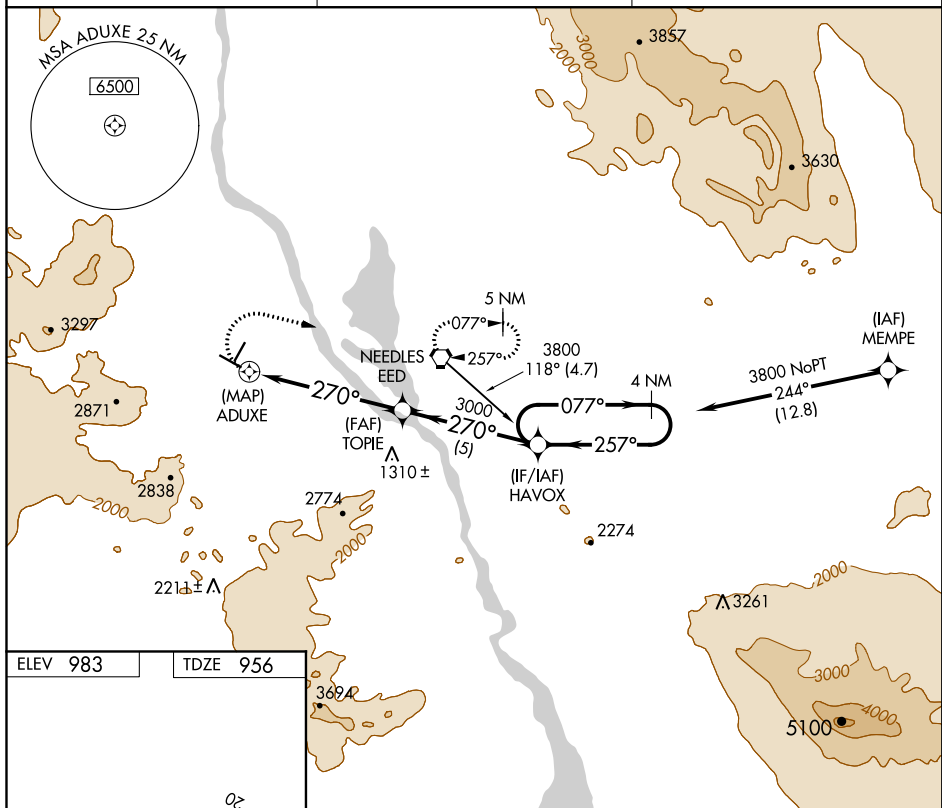
 Straight-in minimums not authorized at night.  
 NA GPS or RNP-0.3 required. DME/DME RNP-0.3 NA.

**MISSED APPROACH:** Climbing right turn to 6000 direct to EED VORTAC and hold.

ASOS  
128.325

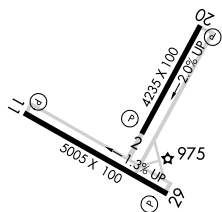
LOS ANGELES CENTER  
134.65 360.65

UNICOM  
123.0 (CTAF) **L**



ELEV 983

TDZE 956



MIRL Rwy 2-20 and 11-29 **L**  
REIL Rwy 11 and 29 **L**

[illegible]

NEEDLES, CALIFORNIA  
Orig 23JAN03

34°46'N-114°37'W

NEEDLES (EED)  
RNAV (GPS) RWY 29

SW-3, 03 DEC 2020 to 31 DEC 2020