

VORTAC TRM <u>116.2</u> Chan 109	APP CRS 316°	Rwy Idg 4995 TDZE -121 Apt Elev -115
--	------------------------	---

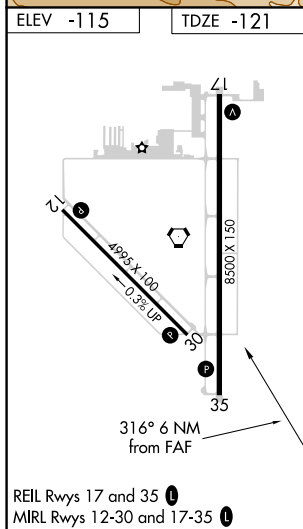
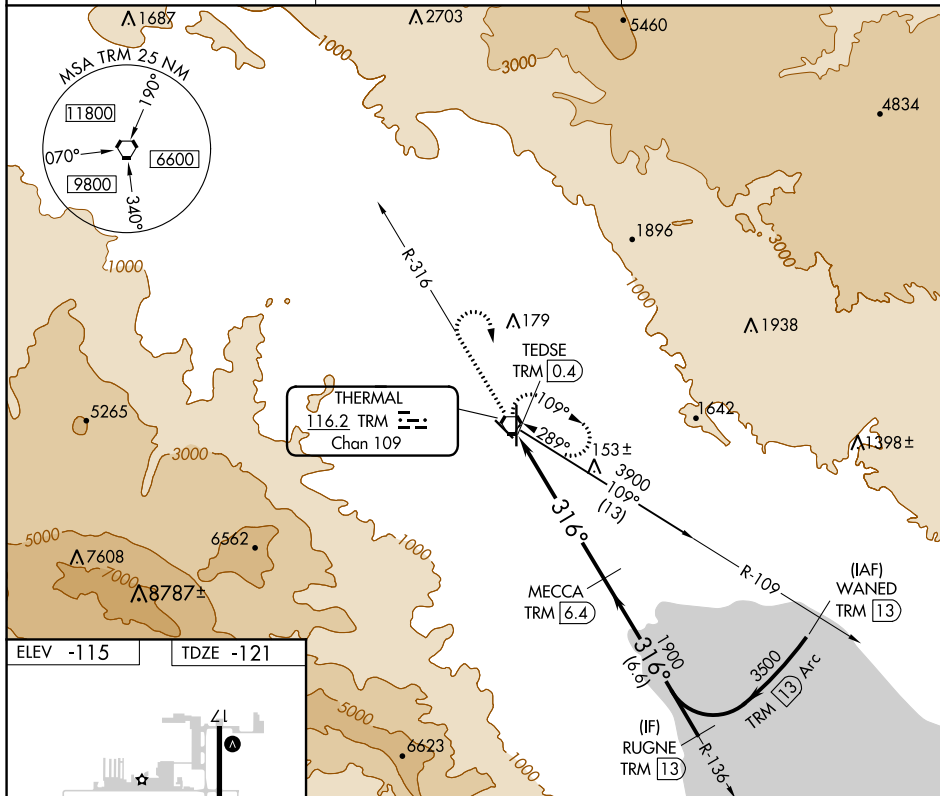
VOR RWY 30
JACQUELINE COCHRAN RGNL (TRM)

DME required.

T
A Rwy 30 helicopter visibility reduction below $\frac{3}{4}$ SM NA.

MISSED APPROACH: Climb to 1300 on TRM VORTAC R-316 then climbing right turn to 5400 direct TRM VORTAC and hold, continue climb-in-hold to 5400.

ASOS 118.325	SOCAL APP CON ★ 135.275 251.1	UNICOM 123.0 (CTAF) 0
------------------------	---	---------------------------------



<p>VGSI and descent angles not coincident (VGSI Angle 3.00/TCH 25).</p>				
<p>RUGNE TRM 13</p> <p>MECCA TRM 6.4</p> <p>316°</p> <p>3500</p> <p>1900</p> <p>≤ 3.13° TCH 45</p> <p>1.3</p> <p>4.7 NM</p> <p>6.6 NM</p>				
CATEGORY	A	B	C	D
S-30	300-1	421 (500-1)	300-1¼	421 (500-1¼)
C CIRCLING	320-1 435 (500-1)	340-1 455 (500-1)	460-1½ 575 (600-1½)	780-3 895 (900-3)