

EDWARDS, CALIFORNIA

VOR/DME or TACAN Y RWY 23L

VORTAC EDW 116.4 Chan 111	APCH CRS 226°	Rwy Idg TDZE Arprt Elev	15,024 2286 2311
---------------------------------	------------------	-------------------------------	------------------------

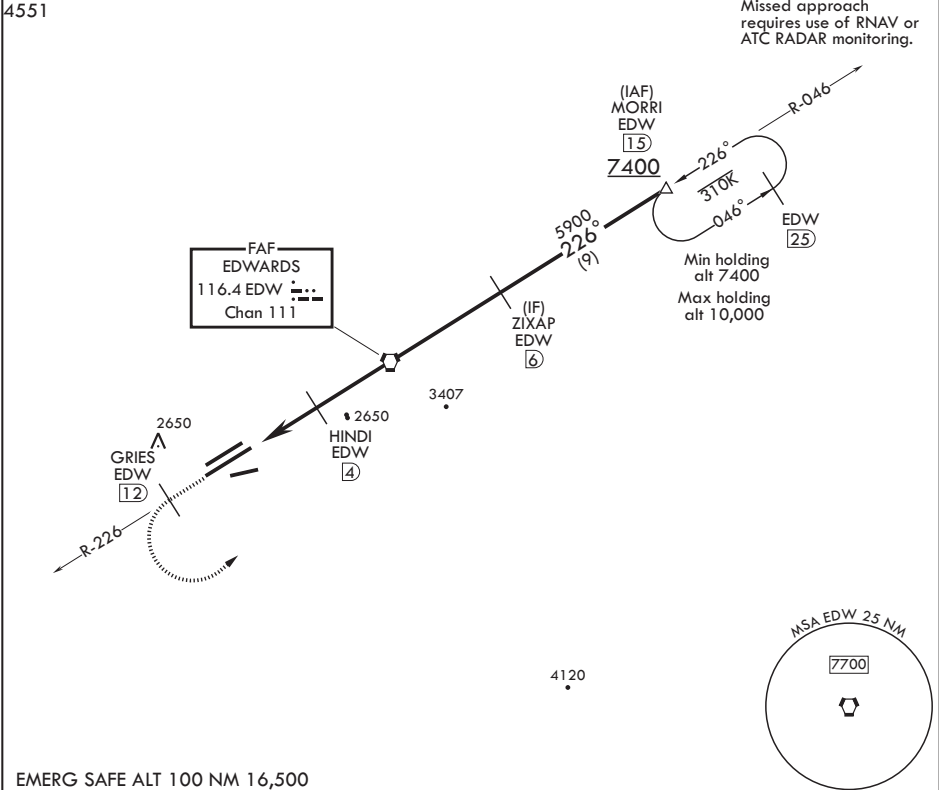
AL-500 (USAF)

EDWARDS AFB (KEDW)

⚠ * Circling not authorized NW of Rwy 5L-23R. Circling not authorized at night to Rwy 5L-23R.

MISSED APPROACH: Climb to 7400. Track EDW VORTAC R-226 outbound to GRIES, then turn left direct MORRI and hold.

ATIS ★ 127.425 269.9	SPORT APP CON/DEP CON 132.75 343.7	TOWER ★ 120.7 318.1	GND CON 121.8 225.4
-------------------------	---------------------------------------	------------------------	------------------------



EMERG SAFE ALT 100 NM 16,500

7400 EDW R-226	GRIES EDW 12	MORRI EDW 15	ELEV 2311 HIRL Rwy 5R-23L REIL Rwy 23L			TDZE 2286
VGSi and descent angles not coincident (VGSi Angle 3.00/TCH 49).						
CATEGORY	A	B	C	D	E	
S-23L	2640-1		354	(400-1)		
CIRCLING*	2880-1 569 (600-1)		2880-1½ 569 (600-1½)	2880-2 569 (600-2)		

EDWARDS, CALIFORNIA

34°55'N - 117°53'W

EDWARDS AFB (KEDW)

Amdt 2 23APR20

VOR/DME or TACAN Y RWY 23L

SW-3, 03 DEC 2020 to 31 DEC 2020

SW-3, 03 DEC 2020 to 31 DEC 2020