

VOR/DME or TACAN RWY 23R

VORTAC EDW 116.4 Chan 111	APCH CRS 229°	Rwy Idg 12,000 TDZE 2296 Arpt Elev 2311
---	-------------------------	--

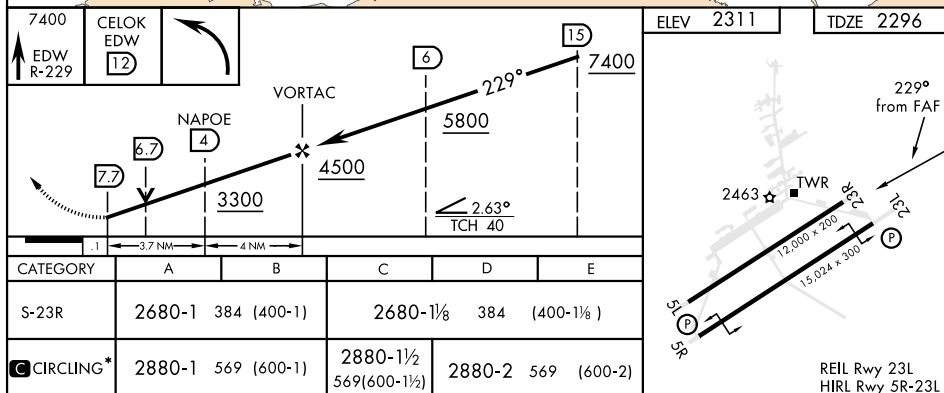
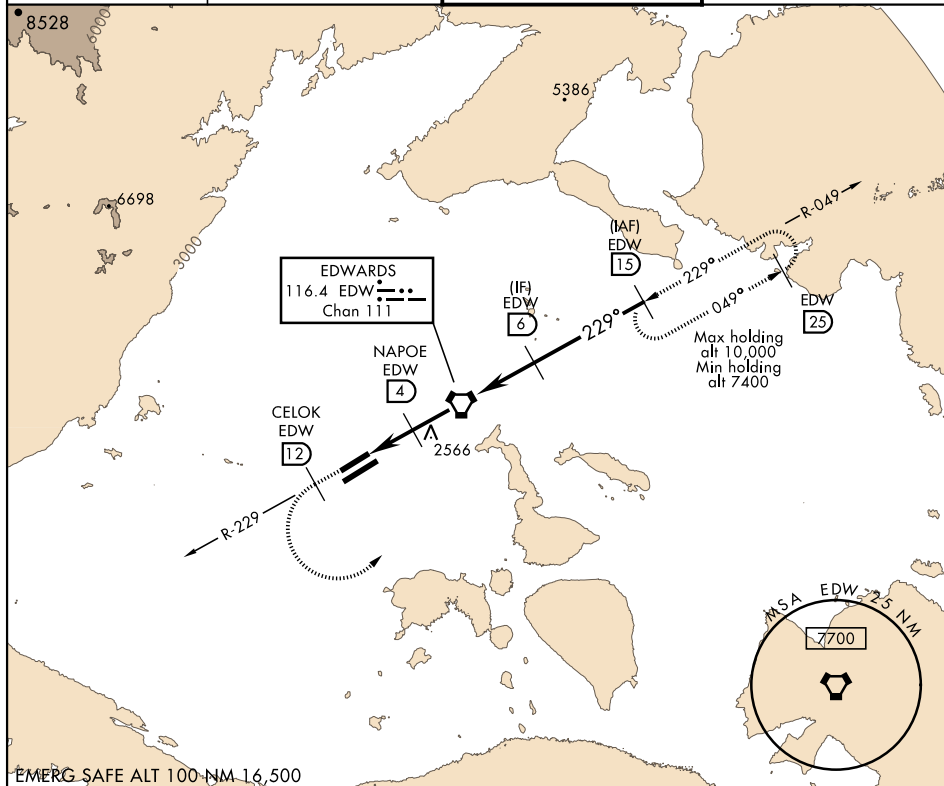
AL-500 [USAF]

EDWARDS AFB (KEDW)

T*Circling not authorized NW of Rwy 5L-23R.
Circling not authorized at night to Rwy 5L-23R.

MISSED APPROACH: Track EDW VORTAC R-229 outbound to CELOK, then turn left to EDW R-049/15 DME and hold. Maintain 7400. Missed approach requires use of RNAV or ATC RADAR monitoring.

<p>ATIS ★</p> <p>127.425 269.9</p>	<p>SPORT APP CON</p> <p>132.75 343.7</p>	<p>EDWARDS TOWER ★</p> <p>120.7 318.1</p>	<p>GND CON</p> <p>121.8 225.4</p>
------------------------------------	--	---	-----------------------------------



EDWARDS, CALIFORNIA

34°55'N-117°53'W

EDWARDS AFB (KEDW)

Admt 1 30JAN20

VOR/DME or TACAN RWY 23R

SW-3, 03 DEC 2020 to 31 DEC 2020

SW-3, 03 DEC 2020 to 31 DEC 2020