

HI-TACAN Z RWY 5R

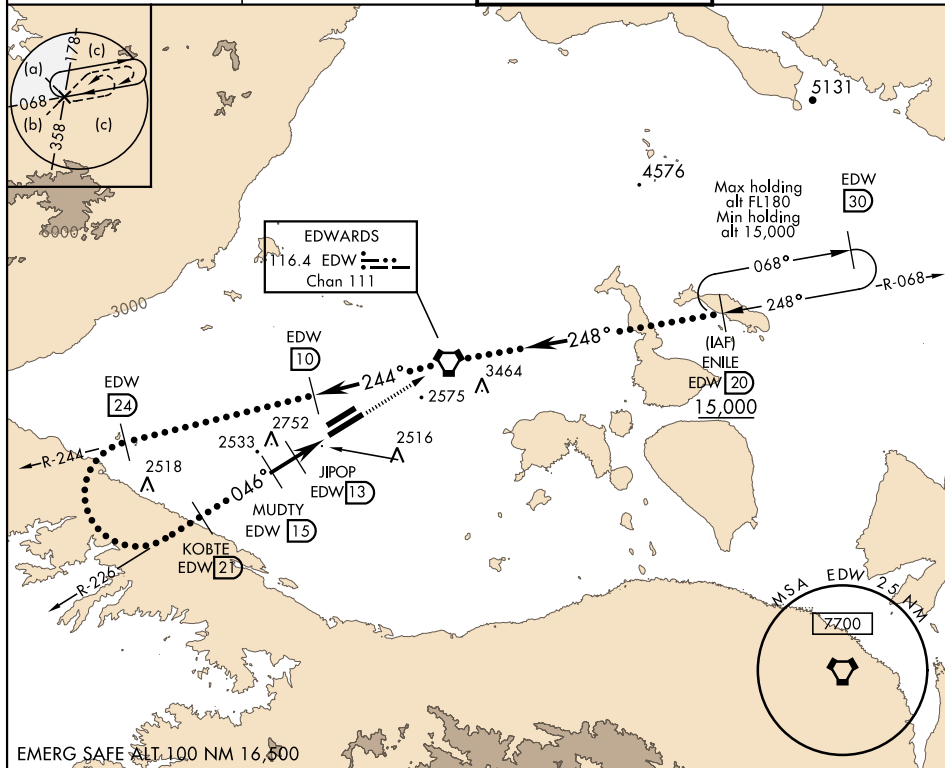
VORTAC EDW 116.4 Chan 111	APCH CRS 046°	Rwy Idg 15,024 TDZE 2303 Arpt Elev 2311
---	-------------------------	--

JAL-500 [USAF]

EDWARDS AFB (KEDW)

<p>✈</p> <p>* Circling not authorized NW of Rwy 5L-23R. Circling not authorized at night to Rwy 5L-23R.</p>	<p>✈</p> <p>MISSED APPROACH: Track EDW VORTAC R-226 to EDW. Intercept EDW R-068 to ENILE and hold. Maintain 15,000. Missed approach requires use of RNAV or ATC RADAR monitoring.</p>
--	---

<p>ATIS ★</p> <p>127.425 269.9</p>	<p>SPORT APP CON</p> <p>132.75 343.7</p>	<p>EDWARDS TOWER ★</p> <p>120.7 318.1</p>	<p>GND CON</p> <p>121.8 225.4</p>
--	--	---	---



Remain within 28 NM			15,000	EDW	ELEV 2311	TDZE 2303
<p>5700</p> <p>R-244</p> <p>244°</p> <p>15,000</p> <p>5300</p> <p>046°</p> <p>3900</p> <p>3200</p> <p>2 NM</p> <p>3 NM</p> <p>2.92°</p> <p>TCH 47</p>						
CATEGORY	C	D	E			
S-5R	2820-1½	517	(600-1½)			
CIRCLING*	2880-1½ 569 (600-1½)	2880-2	569 (600-2)			

EDWARDS, CALIFORNIA

34°55'N-117°53'W

EDWARDS AFB (KEDW)

Amdt 1 30JAN20

HI-TACAN Z RWY 5R

SW-3, 03 DEC 2020 to 31 DEC 2020