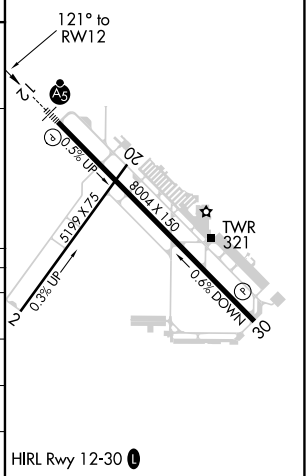
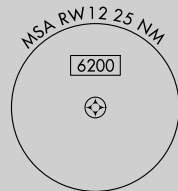


RNAV (GPS) RWY 12  
SANTA MARIA PUBLIC/CAPTAIN G ALLAN HANCOCK FIELD (SMX)

**MISSED APPROACH:**  
Climb to 800 then  
climbing left turn to  
5000 direct MQO  
VORTAC and hold.

UNICOM  
122.95

SW-3, 03 DEC 2020 to 31 DEC 2020