


LOC/DME I-SMX	APP CRS	Rwy Idg
108.9	120°	8004
Chan 26		TDZE 230
		Apt Elev 261

ILS or LOC RWY 12

SANTA MARIA PUBLIC/CAPTAIN G ALLAN HANCOCK FIELD (SMX)

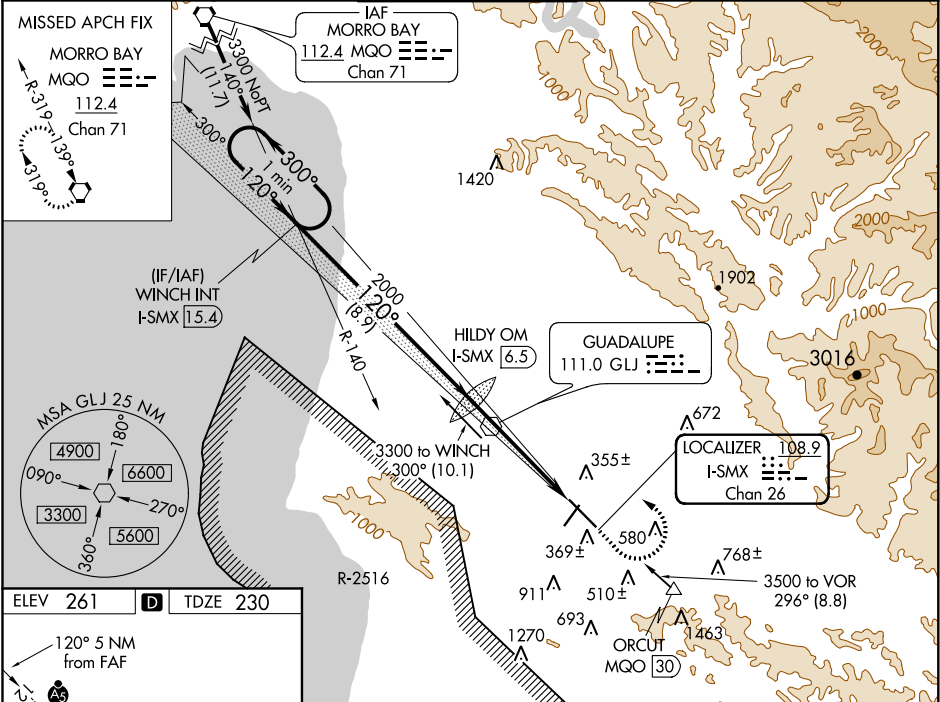
Night Landing: Rwy 2 NA. VDP NA with Vandenberg alimeter setting.
When local altimeter setting not received, use Vandenberg altimeter setting and increase all DA 43 feet, and all MDA 60 feet, increase S-LOC 12 Cat C/D visibility to RVR 5500 and Circling Cat C visibility to 1¾. For inop MALSR, increase S-LOC 12 Cat C/D visibility to 1¾ mile.
RVR 1800 authorized with the use of FD or AP or HUD to DA.

MALSR



MISSED APPROACH: Climb to 800, then climbing left turn to 5000 direct MQO VORTAC and hold.

ATIS 121.15	SANTA BARBARA APP CON* 124.15 327.8	SANTA MARIA TOWER* 118.3 (CTAF) 239.25	GND CON 121.9	UNICOM 122.95
-----------------------	---	--	-------------------------	-------------------------



ELEV 261	TDZE 230
----------	----------

HIRL Rwy 12-30

FAF to MAP 5 NM

Knots	60	90	120	150	180
Min:Sec	5:00	3:20	2:30	2:00	1:40

One Minute Holding Pattern	WINCH I-SMX 15.4	HILDA OM I-SMX 6.5	800	5000	MQO
----------------------------	------------------	--------------------	-----	------	-----

3300, 2000, 1886

120°, 300°, 120°

GS 3.00° TCH 55

8.9 NM, 3.8 NM, 1.2 NM

CATEGORY	A	B	C	D
S-ILS 12#	430/24 200 (200-½)			
S-LOC 12	680/24 450 (500-½)		680/50 450 (500-1)	
CIRCLING	860-1 599 (600-1)		860-1½ 1320-3 599 (600-1½) 1059 (1100-3)	

SW-3, 03 DEC 2020 to 31 DEC 2020

SW-3, 03 DEC 2020 to 31 DEC 2020