

VORTAC GVO	APP CRS	Rwy Idg	6052	
113.8	279°	TDZE	10	
Chan 85		Apt Elev	10	

VOR or GPS RWY 25

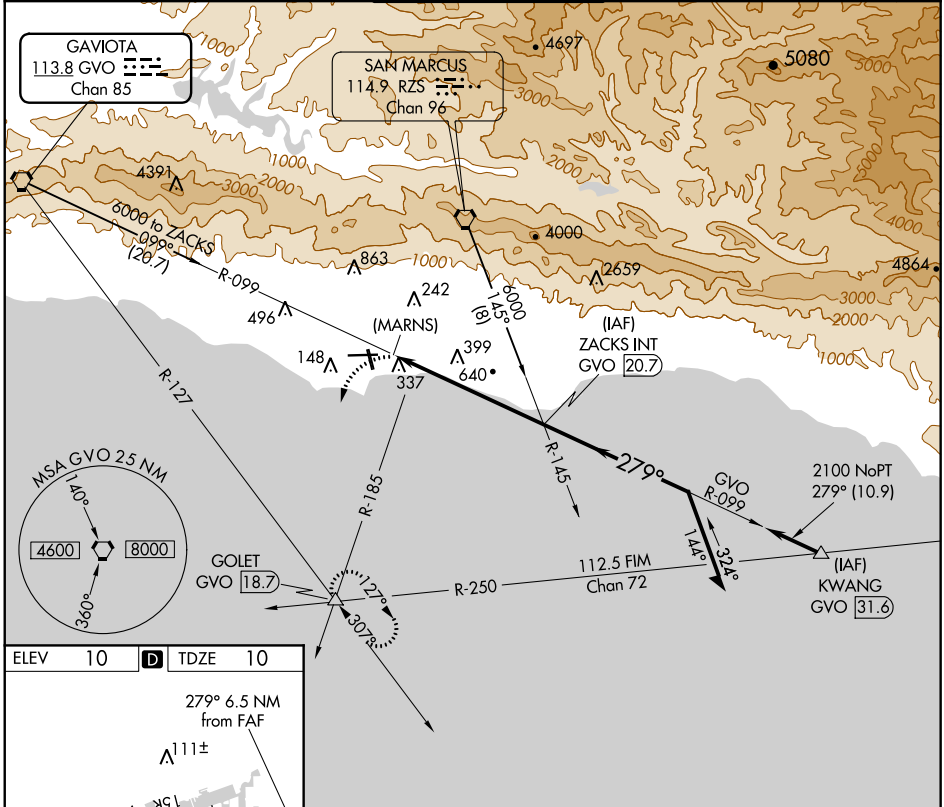
SANTA BARBARA MUNI (SBA)

⚠

Night landing Rwy 15R NA. Helicopter visibility reduction below ¾ SM NA. When local altimeter not received, use Oxnard altimeter setting and increase all MDA 100 feet and all Cats B and C visibility ¼ mile.

MISSED APPROACH: Climbing left turn to 4000 via heading 205° and GVO R-127 to GOLET Int and hold.

ATIS	SANTA BARBARA APP CON	SANTA BARBARA TOWER*	GND CON	CLNC DEL	UNICOM
132.65	120.55 319.15 (151°-329°) 125.4 291.1 (330°-150°)	119.7 (CTAF) 0 254.35	121.7	132.9	122.95



ELEV 10	TDZE 10
279° 6.5 NM from FAF	
A 111±	
6052 X 150	
151	
150	
148 X 100	
33L 33R	
166± A	
HIRL Rwy 7-25	
MIRL Rwy 15R-33L	
REIL Rwy 15R	
REIL Rwy 25	
FAF to MAP 6 NM	
Knots	60 90 120 150 180
Min:Sec	6:00 4:00 3:00 2:24 2:00

GVO R-127	GOLET
hdg 205°	

(MARNIS) GVO 14.7	ZACKS INT GVO 20.7	Remain within 10 NM
099°	279°	3000
2100		
≤ 2.96° TCH 45		

0.5	6 NM
-----	------

CATEGORY	A	B	C	D
S-25	920-1¼ 910 (1000-1¼)	920-2¾ 910 (1000-2¾)	920-3 910 (1000-3)	920-3 910 (1000-3)
CIRCLING	920-1¼ 910 (1000-1¼)	920-2¾ 910 (1000-2¾)	920-3 910 (1000-3)	920-3 910 (1000-3)