

LOC/DME I-SBA	APP CRS	Rwy Idg	6052
110.3	075°	TDZE	13
Chan 40		Apt Elev	13

ILS or LOC RWY 7
SANTA BARBARA MUNI (SBA)

⚠ Circling Rwy 15R NA at night. VDP NA when using Oxnard altimeter setting.

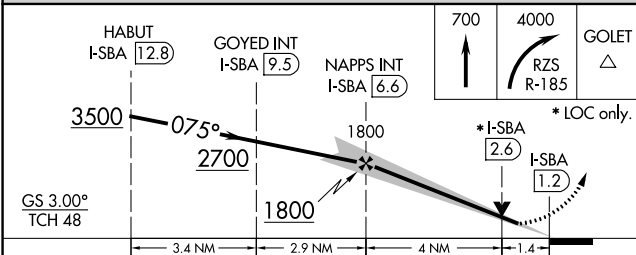
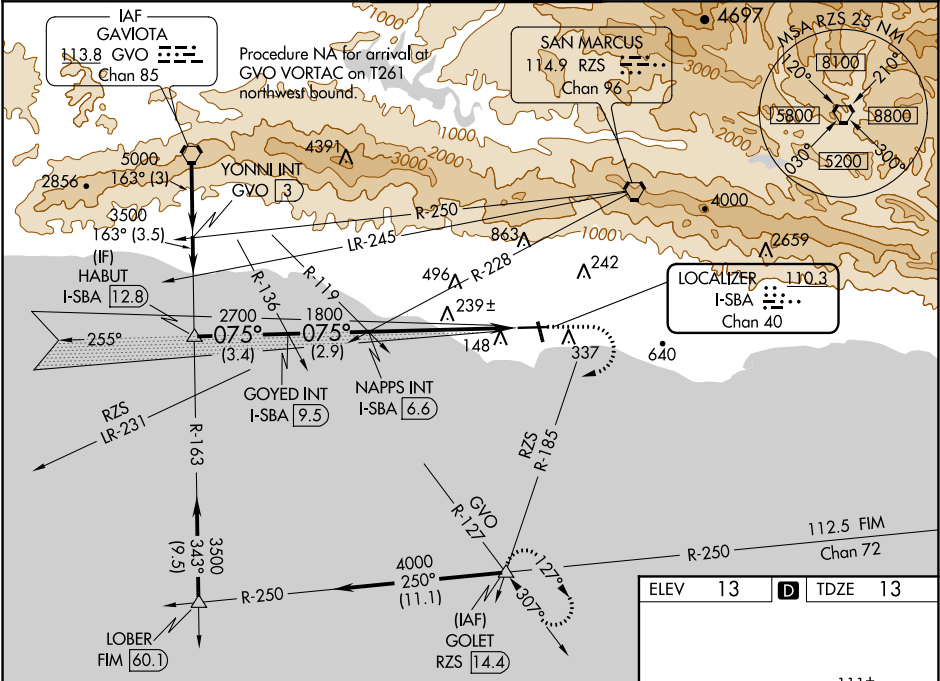
⚠ When local altimeter setting not received, use Oxnard altimeter setting and increase all DA/MDA 100 feet, and S-LOC Cat C visibility to RVR 5000, Cat D visibility to RVR 6000. Increase Circling Cat A visibility ¼ mile, Cat C visibility ½ mile. For inop ALS when using Oxnard altimeter setting, increase S-ILS 7 all Cats visibility to RVR 5000.

RVR 1800 authorized with use of FD or AP or HUD to DA (NA when using Oxnard altimeter setting).

MALSR

MISSED APPROACH:
Climb to 700 then climbing right turn to 4000 on RZS VORTAC R-185 to GOLET INT/RZS 14.4 DME and hold, continue climb-in-hold to 4000.

ATIS 132.65	SANTA BARBARA APP CON 120.55 319.15 (151°-329°) 125.4 291.1 (330°-150°)	SANTA BARBARA TOWER★ 119.7 (CTAF) 0 254.35	GND CON 121.7	CLNC DEL 132.9	UNICOM 122.95
-----------------------	---	---	-------------------------	--------------------------	-------------------------



ELEV 13	D	TDZE 13
HIRL Rwy 7-25 MIRL Rwy 15R-33L 1 REIL Rwy 15R 1 REIL Rwy 25		
FAF to MAP 5.4 NM		
Knots	60	90 120 150 180
Min:Sec	5:24	3:36 2:42 2:10 1:48

SW-3, 03 DEC 2020 to 31 DEC 2020

SW-3, 03 DEC 2020 to 31 DEC 2020