

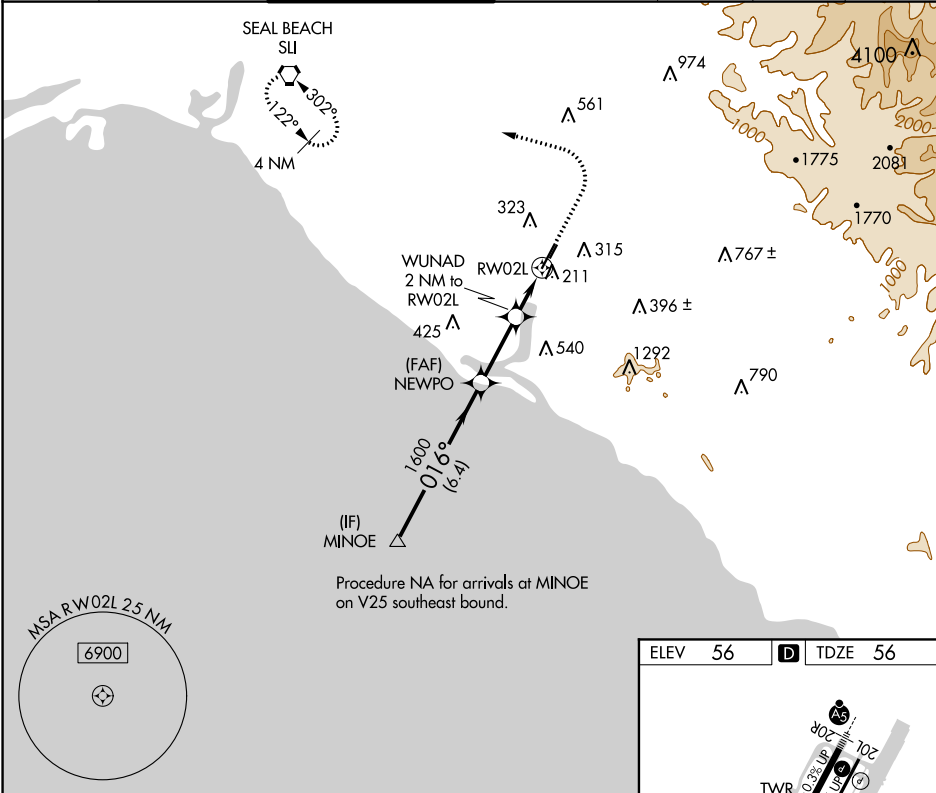
APP CRS	Rwy Idg	5701
016°	TDZE	56
	Apt Elev	56

RNAV (GPS) Y RWY 2L

JOHN WAYNE AIRPORT-ORANGE COUNTY (SNA)

<p><b>⚠</b> DME/DME RNP-0.3 NA. VDP NA when using Fullerton altimeter setting. When local altimeter setting not received, use Fullerton altimeter setting and increase all MDA 40 feet, increase Circling Cat C visibility ¼ SM.</p>	<p>MISSED APPROACH: Climb to 800 then climbing left turn to 2600 direct SLI VORTAC and hold.</p>
--	--

D-ATIS <b>126.0</b>	SOCAL APP CON <b>121.3 263.1</b>	JOHN WAYNE TOWER ★ <b>126.8</b> (CTAF) <b>0 343.625</b>	GND CON (EAST) <b>120.8</b> (WEST) <b>132.25</b>	CLNC DEL <b>118.0</b>	CPDLC	UNICOM <b>122.95</b>
------------------------	-------------------------------------	--	--	--------------------------	-------	-------------------------



VGSI and descent angles not coincident (VGSI Angle 3.00/TCH 72).					800	2600	SLI

