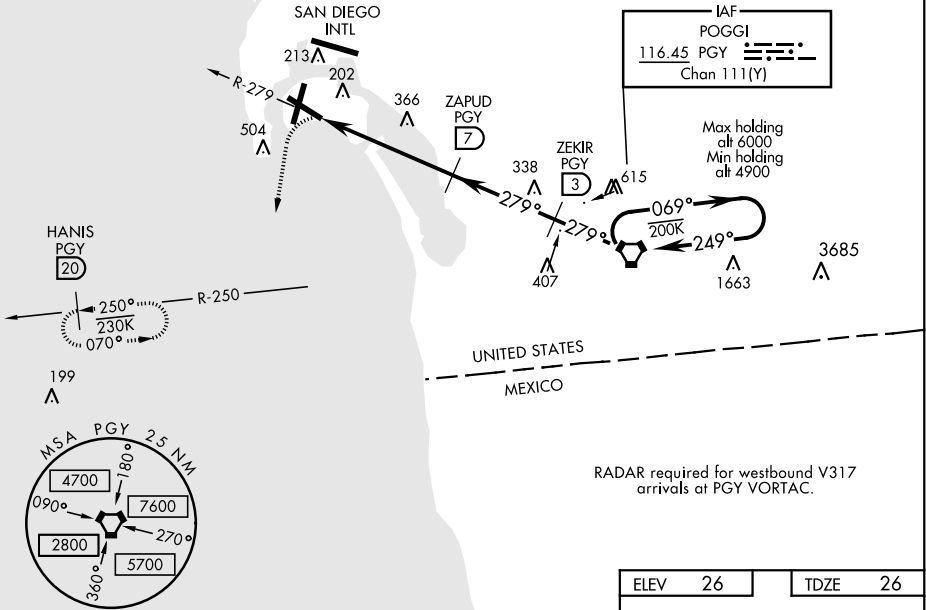


VOR/DME RWY 29

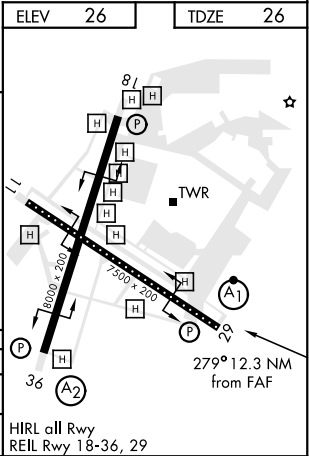
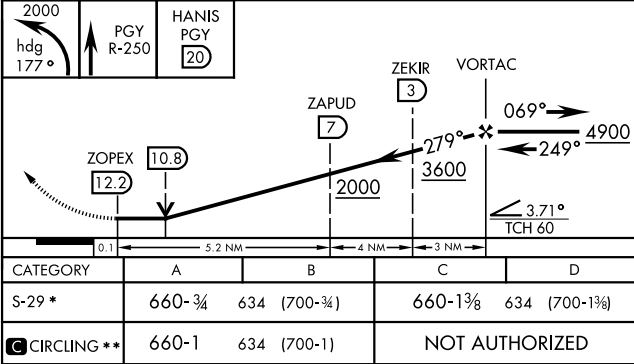
VORTAC PGY 116.45 Chan 111(Y)		APCH CRS 279°	Rwy ldg 7500 TDZE 26 Arpt Elev 26	AL-374 [USN] NORTH ISLAND NAS (HALSEY FIELD) (KNZY)			
<div><div>▼</div><div>* When ALS inop, increase CAT AB vis to 1 mile, CAT CD vis to 1 3/4 miles. ** Circling not authorized W of Rwy 18-36. Circling authorized to Rwy 18 only.</div></div>				<div><div>ALSIF-1</div><div><div><div>A1</div></div><div><div></div></div></div></div>		MISSED APPROACH: Climbing left turn to 2000 via hdg 177° intercept PGY VORTAC R-250 to HANIS and hold.	
ATIS ★ 317.8	SOCAL APP CON 125.15 317.55		NORTH ISLAND TOWER ★ 135.1 336.4		GND CON 118.0 360.675	CLNC DEL 128.4 288.25	PAR/ASR

Visibility reduction by helicopters not authorized.

CAUTION:
Final apch length 12.2 NM.
Final apch intersects RCL at 3726 ft.
Final apch crs 117 ft from RCL at 3000 ft from thld.



EMERG SAFE ALT 100 NM 13,600



VOR/DME RWY 29

SW-3, 03 DEC 2020 to 31 DEC 2020

SW-3, 03 DEC 2020 to 31 DEC 2020