

LOC/DME I-SAN <b>111.55</b> Chan <b>52(Y)</b>	APCH CRS <b>095°</b>	Rwy Idg THRE Arpt Elev <b>N/A</b> <b>N/A</b> <b>26</b>
-----------------------------------------------------	-------------------------	-----------------------------------------------------------------------

AL-374 [USN]

NORTH ISLAND NAS (HALSEY FIELD) (KNZY)

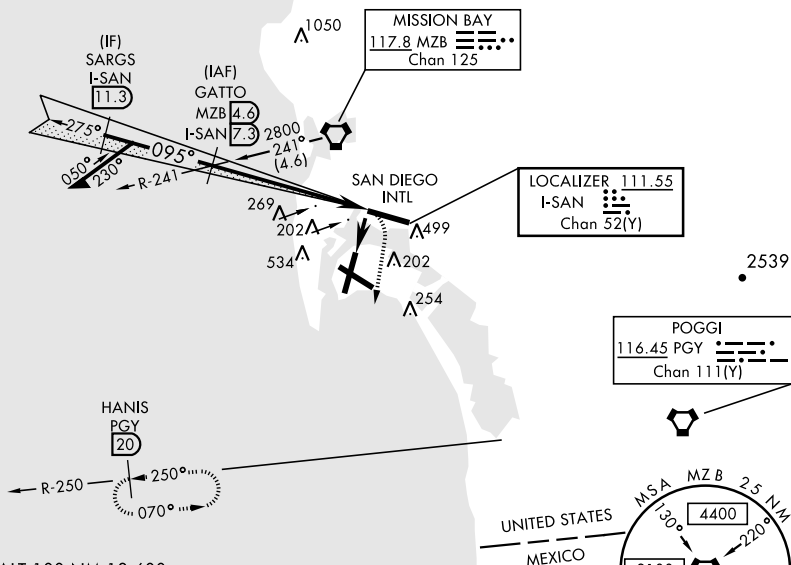
RADAR required at SARGs.

▼ \* CAUTION: Maneuvering for circling approach not authorized W of Rwy18-36 centerline. Approach authorized for Rwy 18 or left downwind approach to Rwy 29 after flying down Rwy 18.

MISSED APPROACH: Climb and maintain 2000 via hdg 177°, intercept PGY VORTAC R-250 to HANIS and hold.

ATIS ★ <b>317.8</b>	SOCAL APP CON <b>125.15 317.55</b>	NORTH ISLAND TOWER ★ <b>135.1 336.4</b>	LINDBERGH TOWER <b>118.3 338.225</b>	GND CON <b>118.0 360.675</b>	CLNC DEL <b>128.4 288.25</b>	PAR/ASR
------------------------	---------------------------------------	--------------------------------------------	-----------------------------------------	---------------------------------	---------------------------------	---------

CAUTION: Aircraft executing missed approach after beginning circling maneuver do not return to missed approach point.



EMERG SAFE ALT 100 NM 13,600

