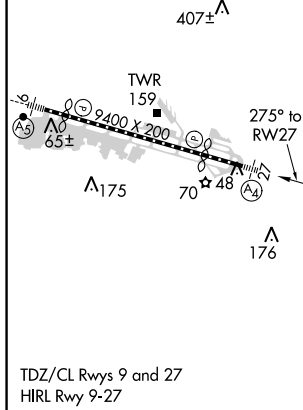
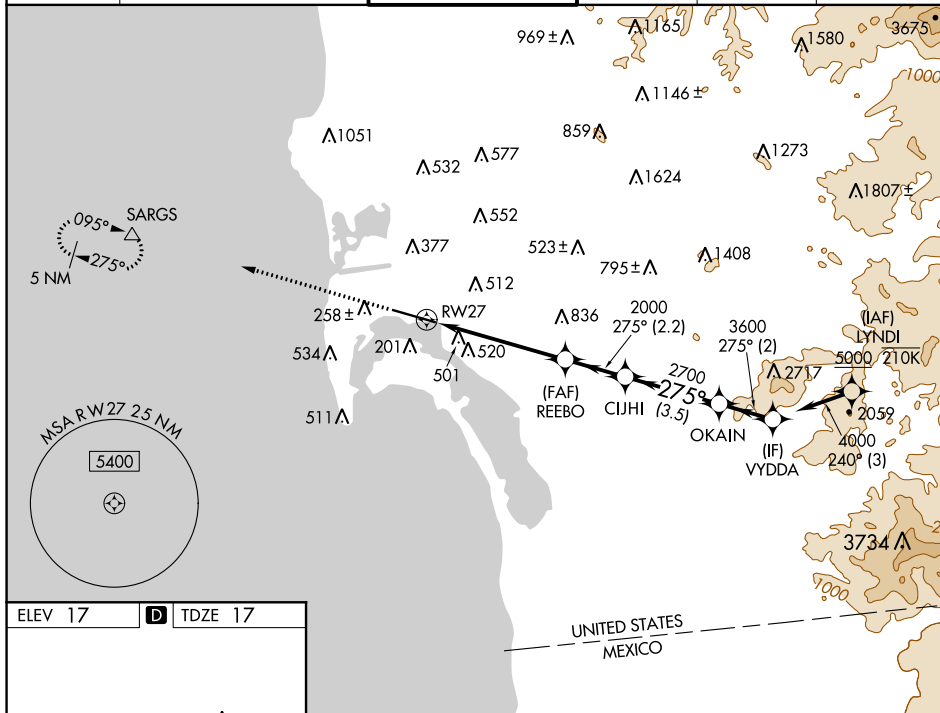
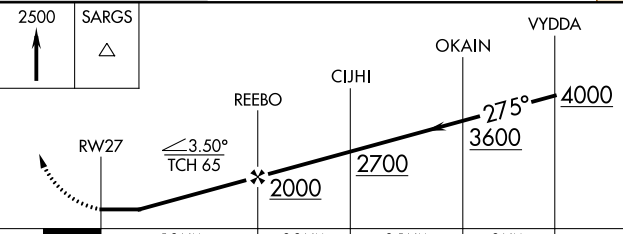


WAAS CH 82527 W27A	APP CRS 275°	Rwy Idg 7590 TDZE 17 Apt Elev 17
--	------------------------	---

RNAV (GPS) Y RWY 27
SAN DIEGO INTL (SAN)

RNP APCH.		<div><div><div></div><div></div></div><div>Rwy 27 helicopter visibility reduction below RVR 5000 NA. Straight-in Rwy 27 at night, operational VGSi required, remain on or above VGSi glidepath until threshold. Circling NA north of Rwy 9-27. For inop ALS, increase LNAV Cats C/D visibility to 2 SM. Inop table does not apply to LP Cats A/B and LNAV Cat A.</div></div>	<div><div>MALS</div><div><div><div></div><div></div></div><div>A4</div></div></div>	<div>MISSED APPROACH: Climb to 2500 direct SARGs and hold.</div>	
<div><div>D-ATIS</div><div>134.8</div></div>	<div><div>SOCAL APP CON</div><div>119.6 363.1 (WEST)</div><div>124.35 279.625 (EAST)</div></div>	<div><div>LINDBERGH TOWER</div><div>118.3 338.225</div></div>	<div><div>GND CON</div><div>123.9</div></div>	<div><div>CLNC DEL</div><div>125.9</div></div>	<div>CPDLC</div>



2500 ↑	SARGS △				
CATEGORY	A	B	C	D	
LP MDA	680/50	663 (700-1)	680-1 ³ / ₄	663 (700-1 ³ / ₄)	
LNAV MDA	760/50 743 (800-1)	760/55 743 (800-1)	760-1 ⁷ / ₈	743 (800-1 ⁷ / ₈)	
CIRCLING	820-1 803 (900-1)	820-1 ¹ / ₄ 803 (900-1 ¹ / ₄)	820-2 ¹ / ₂ 803 (900-2 ¹ / ₂)	940-3 923 (1000-3)	