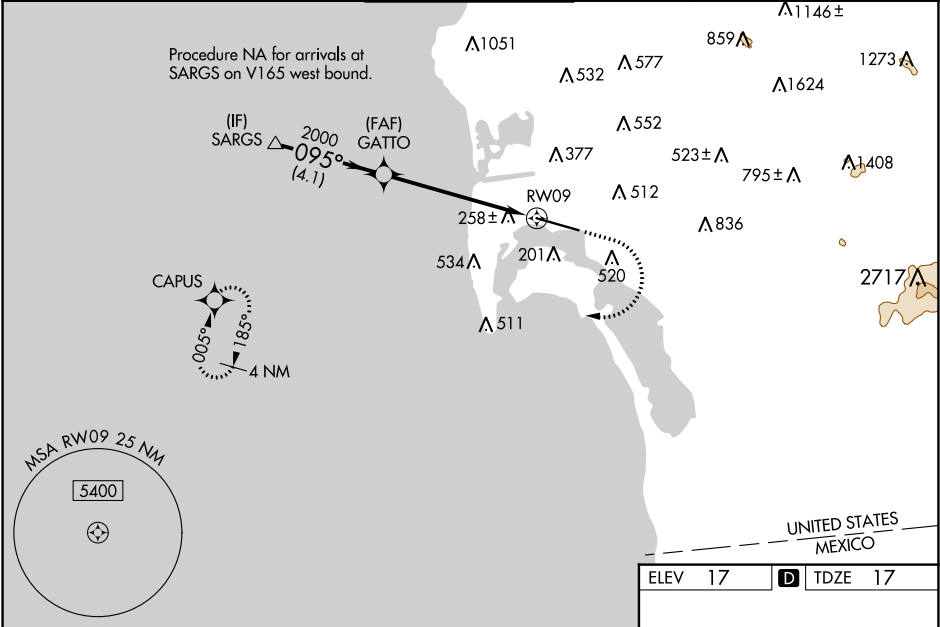


WAAS CH 49237 W09A	APP CRS 095°	Rwy Idg 7280 TDZE 17 Apt Elev 17
--	------------------------	---

RNAV (GPS) RWY 9
SAN DIEGO INTL (SAN)

RNP APCH. <div><div>▼</div><div>▲</div></div> <div>Circling NA north of Rwy 9-27. For uncompensated Baro-VNAV systems, LNAV/VNAV NA below 6°C or above 47°C. When Circling to Rwy 27 at night, operational VGSI required, remain on or above VGSI glidepath until threshold. Rwy 9 helicopter visibility reduction below RVR 4000 NA. Inop table does not apply to LPV all Cats. For inop ALS, increase LNAV Cats A/B visibility to RVR 5500.</div>		MALSR 	MISSED APPROACH: Climb to 2000 then climbing right turn to 3000 direct CAPUS and hold.
--	--	-----------	--

D-ATIS 134.8	SOCAL APP CON 119.6 363.1 (WEST) 124.35 279.625 (EAST)	LINDBERGH TOWER 118.3 338.225	GND CON 123.9	CLNC DEL 125.9	CPDLC
------------------------	--	---	-------------------------	--------------------------	-------



VGSI and RNAV glidepath not coincident (VGSI Angle 3.30/TCH 76).				
<div><div>SARGS</div><div>GATTO</div><div>2000</div><div>2000</div><div>2100</div><div>095°</div><div>GP 3.10°</div><div>TCH 55</div><div>4.1 NM</div><div>4.3 NM</div><div>1.6 NM</div><div>RWY 9</div><div>*1.6 NM to RWY 9</div><div>*LNAV only.</div></div>				
CATEGORY	A	B	C	D
LPV DA	262/40		245 (300-¾)	
LNAV/VNAV DA	621-1½		604 (700-1½)	
LNAV MDA	600/40 583 (600-¾)		600-1¼ 583 (600-1¼)	
CIRCLING	800-1 783 (800-1)	820-1 803 (900-1)	820-2¼ 803 (900-2¼)	940-3 923 (1000-3)

