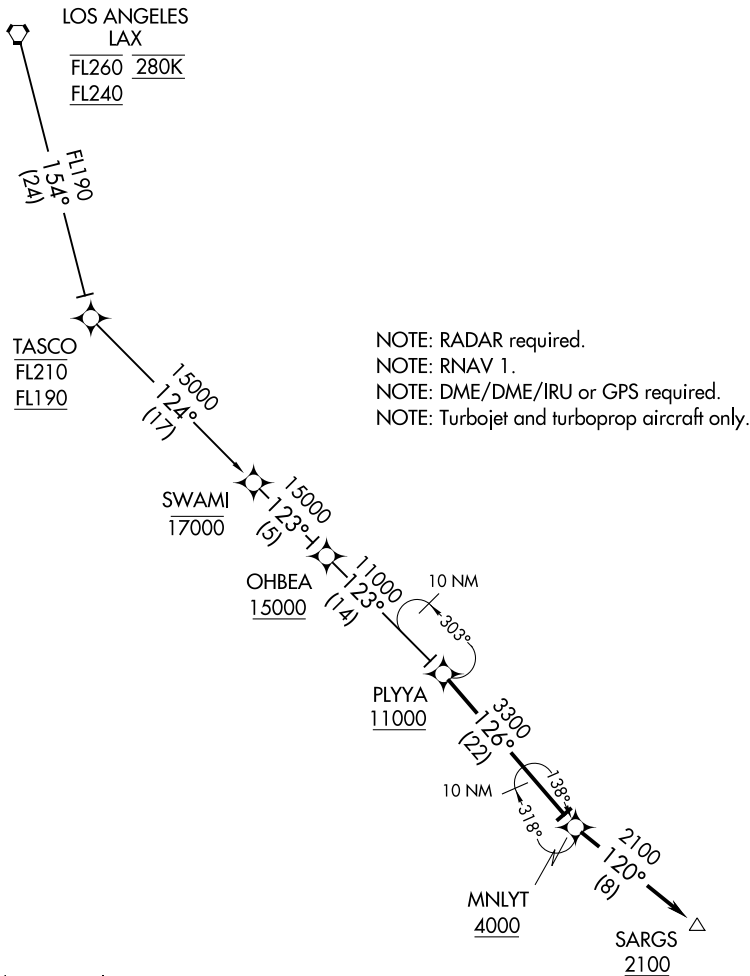


SOCAL APP CON  
128.1 281.4  
D-ATIS 134.8



NOTE: Chart not to scale.

ARRIVAL ROUTE DESCRIPTION

LOS ANGELES TRANSITION (LAX.PLYYA1)

From PLYYA on track 126° to cross MNLYT at or above 4000.  
LANDING RUNWAY 9: From MNLYT on track 120° to cross SARGS at or above 2100.  
Expect ILS or LOC RWY 9 approach.