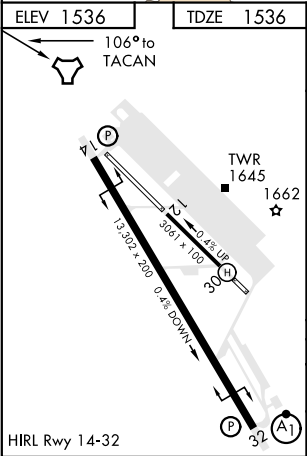
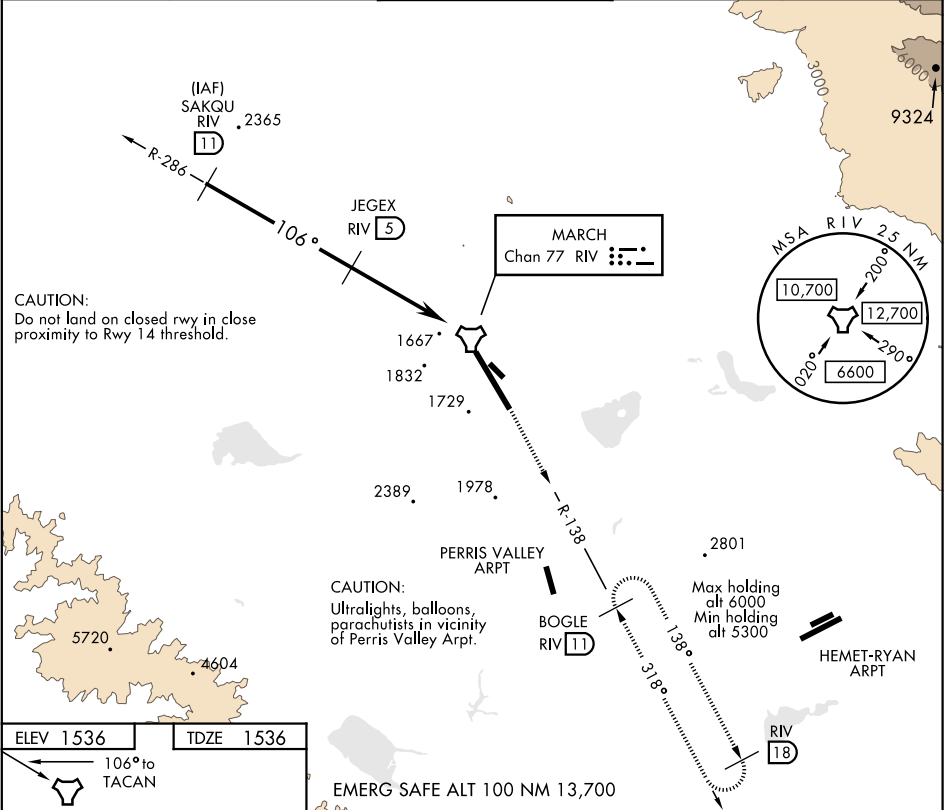


TACAN Y RWY 14

TACAN RIV Chan 77	APCH CRS 106°	Rwy ldg 13,302 TDZE 1536 Arprt Elev 1536	AL-348 [USAF]	MARCH ARB (KRIV)
----------------------	------------------	--	---------------	------------------

V * Circling not authorized NE of Rwy 14-32. Rapid rising terrain.	MISSED APPROACH: Climb out RIV TACAN R-138 direct BOGLE, continue to climb in hold to 5300.
--	--

ATIS 134.75 239.05	SOCAL APP CON 134.0 278.3	MARCH TOWER 127.65 253.5	GND CON 121.75 335.8	CLNC DEL 121.75 335.8
-----------------------	------------------------------	-----------------------------	-------------------------	--------------------------



EMERG SAFE ALT 100 NM 13,700		SAKQU R-286 11		JEGEX 5		5300 BOGLE RIV R-138 11	
4500		106°		3100		TACAN	
2.58° TCH 56		4.0 NM		1.9		MEKIE 1	
CATEGORY		A		B		C	
S-14		2260-17/8 724 (800-17/8)		2260-2 724 (800-2)		2260-2 724 (800-2)	
CIRCLING*		2260-17/8 724 (800-17/8)		2260-17/8 724 (800-17/8)		2300-2 1/4 764 (800-2 1/4)	
						2440-3 904 (1000-3)	
						2840-3 1304 (1400-3)	

TACAN Y RWY 14

SW-3, 03 DEC 2020 to 31 DEC 2020

SW-3, 03 DEC 2020 to 31 DEC 2020