

19059

SKYES-FOUR DEPARTURE (SKYES 4•SKYES)

SHL-348 [USAF]

MARCH ARB (KRIV)

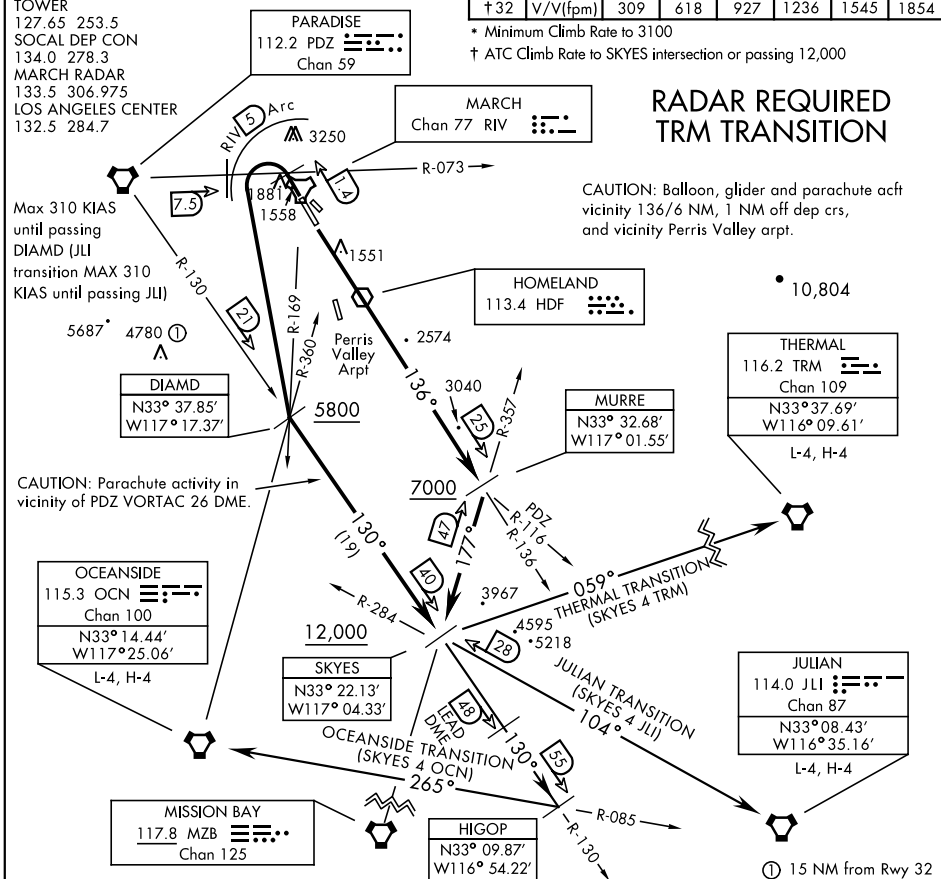
RIVERSIDE, CALIFORNIA

ATIS 134.75 239.05
GND CON/CLNC DEL
121.75 335.8
TOWER
127.65 253.5
SOCAL DEP CON
134.0 278.3
MARCH RADAR
133.5 306.975
LOS ANGELES CENTER
132.5 284.7

Rwy	Knots	60	120	180	240	300	360
*32	V/V(fpm)	231	462	693	924	1155	1386
†14	V/V(fpm)	334	668	1002	1336	1670	2004
†32	V/V(fpm)	309	618	927	1236	1545	1854

* Minimum Climb Rate to 3100

† ATC Climb Rate to SKYES intersection or passing 12,000



DEPARTURE ROUTE DESCRIPTION

TAKE-OFF RWY 14: Climb via RIV TACAN R-136 or climb direct HDF VOR, then via HDF R-136 to MURRE, intercept MZB VORTAC R-357 to SKYES, cross MURRE at or above 7000, and SKYES at or above 12,000. Thence via transition or assigned route.

TAKE-OFF RWY 32: Climb on track 315°, then turn left crossing PDZ VORTAC R-073/RIV TACAN 1.4 DME direct DIAMD, proceed no closer than 7.5 DME PDZ. Remain within 5 DME RIV. Cross DIAMD at or above 5800. Intercept PDZ R-130 to SKYES, cross SKYES at or above 12,000. Thence via transition or assigned route.

JULIAN TRANSITION (SKYES 4 JUL): From over SKYES via JLI VORTAC R-284 direct JLI. MAX 310 KIAS until passing JULIAN VORTAC.

OCEANSIDE TRANSITION (SKYES 4 OCN): From over SKYES via PDZ VORTAC R-130 direct HIGOP, intercept OCN VORTAC R-085 direct OCN.

THERMAL TRANSITION (SKYES 4 TRM): From over SKYES track 059° to TRM. (Radar required)

SKYES-FOUR DEPARTURE (SKYES 4•SKYES)

RIVERSIDE, CALIFORNIA

MARCH ARB (KRIV)

Orig 28FEB19

SW-3, 03 DEC 2020 to 31 DEC 2020

SW-3, 03 DEC 2020 to 31 DEC 2020