

RIVERSIDE, CALIFORNIA

RNAV (GPS) A

APCH CRS 186°	Rwy Idg TDZE Arprt Elev 1536	N/A N/A 1536
------------------	---------------------------------------	--------------------

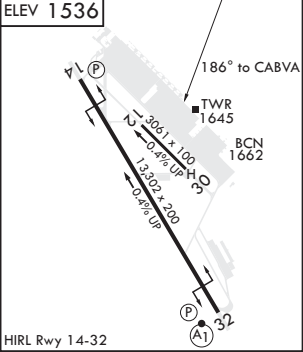
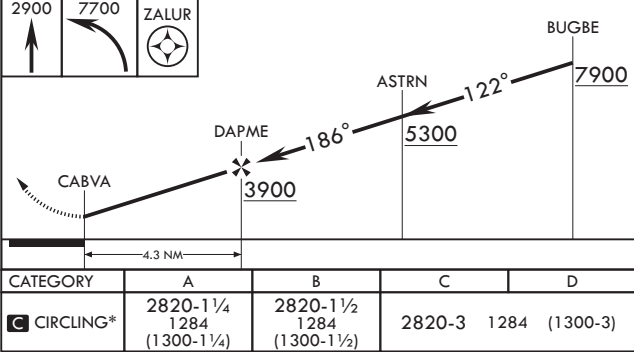
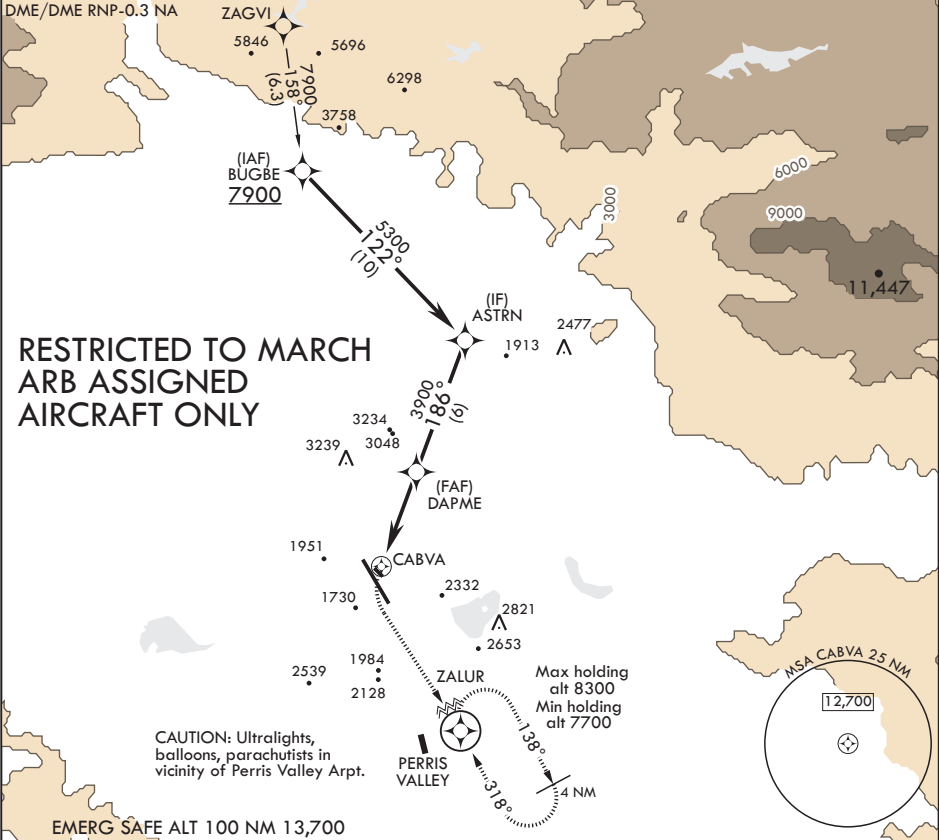
AL-348 (USAF)

MARCH ARB (KRIV)

⚠ * Circling NA NE of Rwy 14-32 due to rapid rising terrain. Do not commence circling until crossing Rwy 14-32 centerline.

MISSED APPROACH: Climb to 2900 then climbing left turn to 7700 direct ZALUR and hold, continue climb in hold to 7700.

ATIS 134.75 239.05	SOCAL APP CON/DEP CON 134.0 278.3	TOWER 127.65 253.5	GND CON 121.75 335.8	CLNC DEL 121.75 335.8
-----------------------	--------------------------------------	-----------------------	-------------------------	--------------------------



RIVERSIDE, CALIFORNIA

33°53'N - 117°16'W

MARCH ARB (KRIV)

Amdt D 02 FEB17

RNAV (GPS) A

SW-3, 03 DEC 2020 to 31 DEC 2020

SW-3, 03 DEC 2020 to 31 DEC 2020