


RIVERSIDE, CALIFORNIA

RNAV (GPS) RWY 32

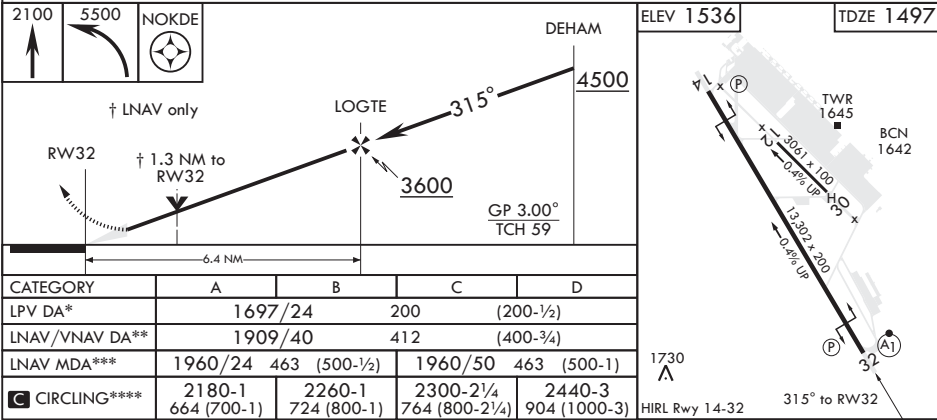
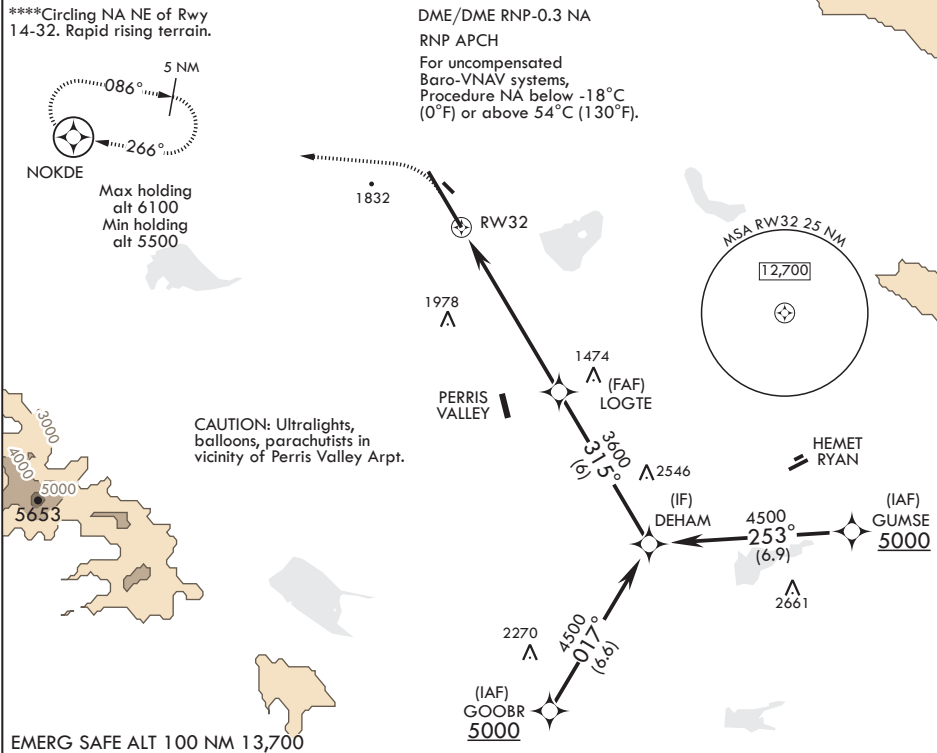
WAAS CH 91364 W32A	APCH CRS 315°	Rwy Ldg TDZE Arpt Elev	13,302 1497 1536
--------------------------	------------------	------------------------------	------------------------

AL-348 (USAF)

MARCH ARB (KRIV)

▼ * When ALS inop increase CAT ABCD RVR to 40, vis to 3/4 mile. ** When ALS inop increase CAT ABCD RVR to 60, vis to 1 1/8 miles. *** When ALS inop, increase CAT AB RVR to 55, vis to 1 mile; CAT CD vis to 1 3/8 miles.	ALSF-1 	MISSED APPROACH: Climb to 2100 then climbing left turn to 5500 direct NOKDE and hold, continue climb in hold to 5500.
---	---	---

ATIS 134.75 239.05	SOCAL APP CON/DEP CON 134.0 278.3	TOWER 127.65 253.5	GND CON 121.75 335.8	CLNC DEL 121.75 335.8
-----------------------	--------------------------------------	-----------------------	-------------------------	--------------------------



RIVERSIDE, CALIFORNIA

33°53'N - 117°16'W

MARCH ARB (KRIV)

Amtr 6 31JAN19

RNAV (GPS) RWY 32

SW-3, 03 DEC 2020 to 31 DEC 2020

SW-3, 03 DEC 2020 to 31 DEC 2020