

VOR HDF 113.4	APCH CRS 315°	Rwy Idg 13,302 TDZE 1497 Arpt Elev 1536
-------------------------	-------------------------	--

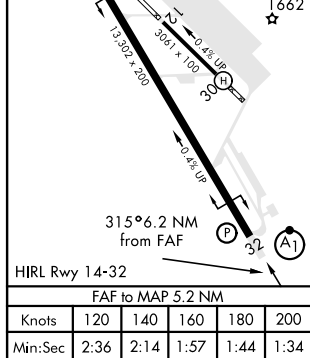
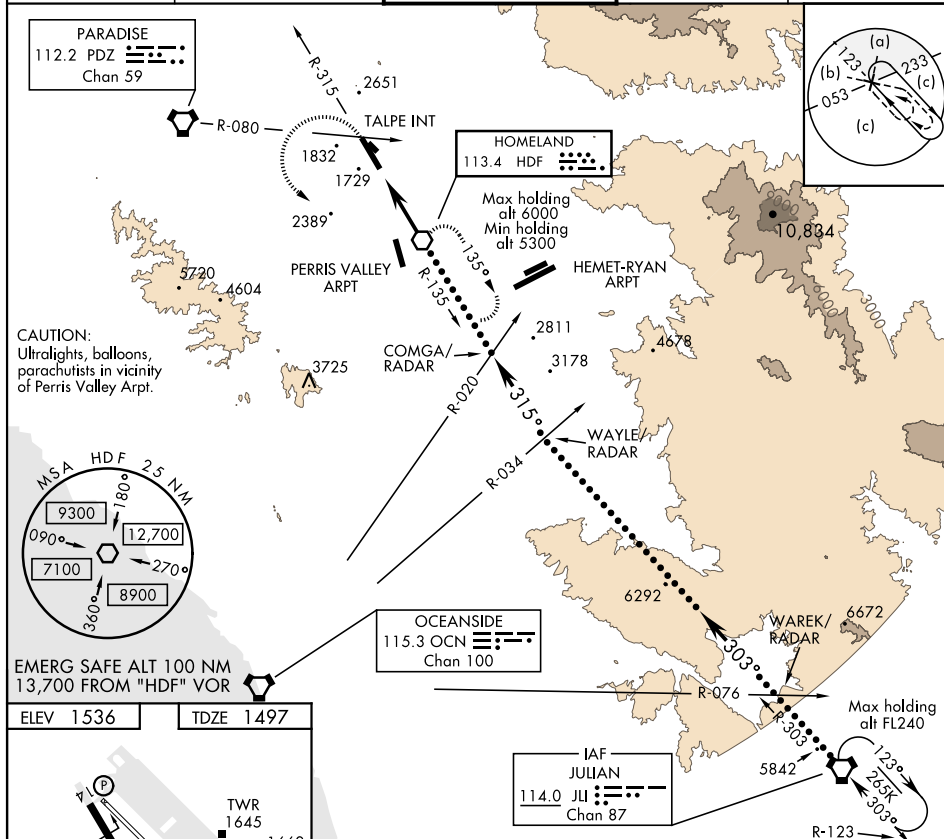
MARCH ARB (KRIV)




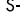
T * When ALS inop, increase CAT CDE vis to 1½ miles.
 ** Circling not authorized NE of Rwy 14-32. Rapid rising terrain.

A diagram of a circular molecule with a single node labeled A_1 at the top.

MISSED APPROACH: Climb to 5300 on HDF VOR R-315 to TALPE, then turn left direct HDF, continue climb in hold to 5300.

ATIS	SOCAL APP CON	MARCH TOWER	GND CON	CLNC DEL
134.75 239.05	134.0 278.3	127.65 253.5	121.75 335.8	121.75 335.8



5300 ↑ HDF R-315	TALPE INT		HDF 	COMGA OCN R-020 /RADAR	WAYLE OCN R-034 /RADAR	WAREK JLI R-303 OCN R-076 /RADAR	JLI VORTAC
				303° • FL240 303° • 12,000 315° 6000 3600 HDF VOR /RADAR 3.13° TCH 59			
1 NM		5.2 NM					
CATEGORY	C		D		E		
S-32 *	2040/60		543		(600-1½)		
 CIRCLING **	2300-2½ 764 (800-2¼)		2440-3 904 (1000-3)		2840-3 1304 (1400-3)		

33°53'N-117°16'W

MARCH ARB (KRIV)

HI-VOR Z RWY 32

SW-3, 03 DEC 2020 to 31 DEC 2020

SW-3, 03 DEC 2020 to 31 DEC 2020