
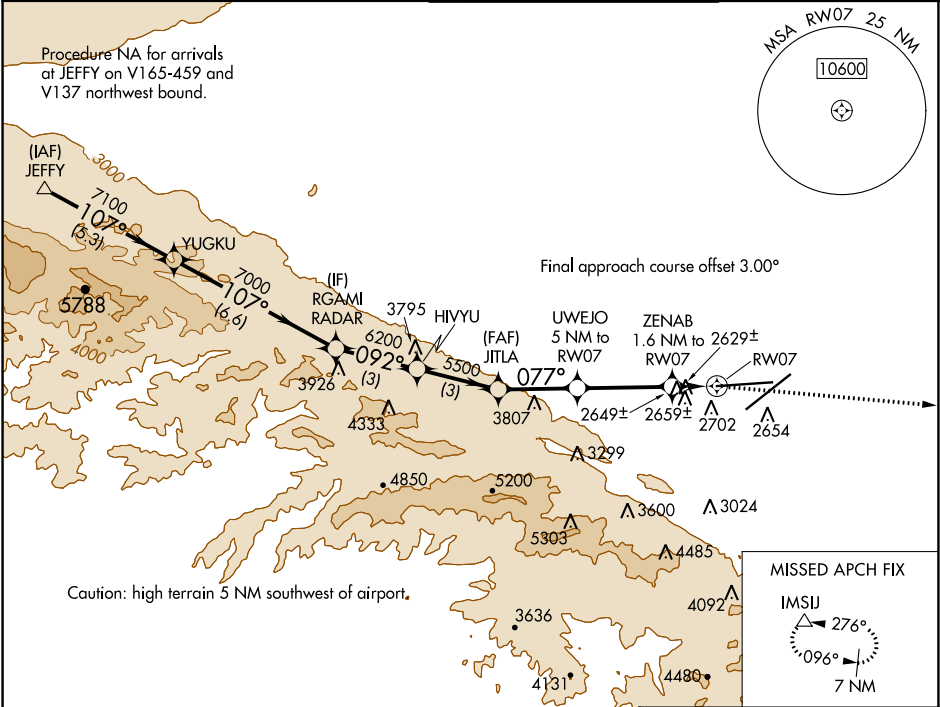




WAAS CH 53441 W07A	APP CRS 077°	Rwy ldg 12002 TDZE 2540 Apt Elev 2543
--	------------------------	--

RNAV (GPS) RWY 7
PALMDALE USAF PLANT 42 (PMD)

RNP APCH.	MISSED APPROACH: Climbing right turn to 7000 direct IMSJ and hold.
 Circling NA for Cats C and D south of Rwy 4 and 25.	

ATIS 118.275	JOSHUA APP CON 124.55 363.0	PALMDALE TOWER ★ 123.7 (CTAF) 0 317.6	GND CON 121.9 317.6
------------------------	---------------------------------------	---	-------------------------------



					ELEV 2543	TDZE 2540		
JEFFY	YUGKU	RGAMI	HIVYU	JITLA	UWEJO 5 NM to RW07	ZENAB 1.6 NM to RW07	7000 	IMSJ 
8000	7100	7000	6200	5500	4440	3180		
107°		092°		077°		3.50° TCH 50		
5.3 NM		6.6 NM		3 NM		3 NM		
2.8 NM		3.4 NM		0.8 NM		0.8 NM		
CATEGORY	A		B		C		D	
LP MDA	2880-1 340 (400-1)							
LNAV MDA	2920-1 380 (400-1)							
CIRCLING	3020-1 477 (500-1)		3060-1 517 (600-1)		3140-1½ 597 (600-1½)		3740-3 1197 (1200-3)	

VGSI and descent angles not coincident (VGSI Angle 3.00/TCH 78).

077° to RW07

ASSAULT STRIP
6000 X 75

12002 X 200


0.5% DOWN

0.3% UP

0.3% DOWN

2626

2640

REIL Rws 4, 7, 22 and 25 

HIRL Rws 4-22 and 7-25 