

HI-ILS or LOC/DME RWY 25

LOC I-PMD 110.7	APCH CRS 254°	Rwy Idg 12,002 TDZE 2503 Arpt Elev 2543
---------------------------	-------------------------	--

JAL-310 [USAF]

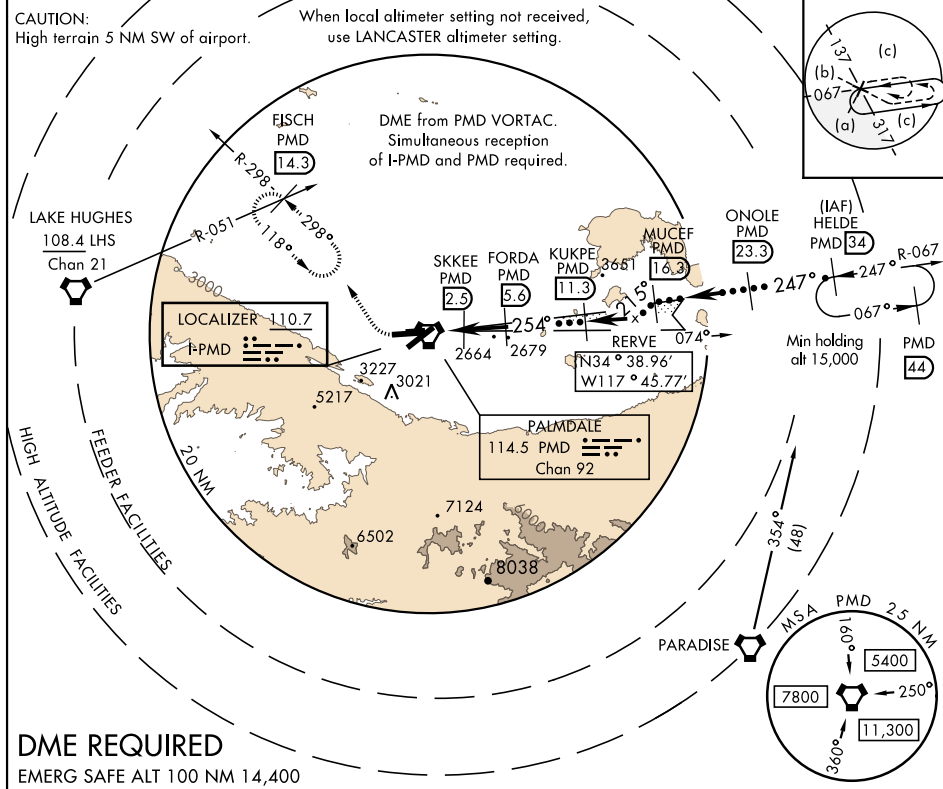
PALMDALE USAF PLANT 42 (KPMD)

<p>⚠ * Circling NA south of Rws 4 and 25.</p>	<p>MISSED APPROACH: Climb to 3000 then climbing right turn on heading 318° and PMD VORTAC R-298 to FISCH INT/PMD 14.3 DME/RADAR and hold, continue climb-in-hold to 6700.</p>
--	---

ATIS 118.275	JOSHUA APP CON 124.55 363.0	PALMDALE TOWER ★ 123.7 (CTAF) 0 317.6	GND CON 121.9 348.6
------------------------	---------------------------------------	---	-------------------------------

CAUTION:
High terrain 5 NM SW of airport.

When local altimeter setting not received,
use LANCASTER altimeter setting.



DME REQUIRED

EMERG SAFE ALT 100 NM 14,400

<p>3000 6700</p> <p>↑ hdg 318°</p> <p>VGSI and descent angles not coincident.</p> <p>FL 180 15,000</p> <p>GS 3.00° TCH 63</p>	<p>LOC only</p> <p>MUCEF ONOLE</p> <p>HELDE R-067</p> <p>FL 180 15,000</p>	<p>ELEV 2543</p> <p>TDZE 2503</p>
<p>SKKEE FORDA</p> <p>VORTAC</p> <p>3500</p> <p>0.5 NM 2.5 NM 3.1 NM</p>	<p>KUKPE</p> <p>REVERE</p> <p>215°</p> <p>254°</p> <p>6000</p> <p>4500</p>	<p>ASSAULT STRIP</p> <p>072° 252°</p> <p>0.3% UP 0.6% UP</p> <p>12,002 x 200</p> <p>12001 x 150</p> <p>TWR 2626</p> <p>2640</p> <p>2699</p>
<p>CATEGORY C</p> <p>S-ILS 25 2703-¾ 200 (200-¾)</p> <p>S-LOC 25 2820-7/8 317 (300-¾)</p> <p>CIRCLING * 3140-1½ 597 (600-1½)</p>	<p>D</p> <p>3740-3 1197 (1200-3)</p>	<p>E</p> <p>3760-3 1217 (1300-3)</p>
<p>REIL Rwy 4-22, 7-25 0 254° 6.1 NM from FAF</p> <p>HIRL Rwy 4-22, 7-25 0</p> <p>FAF to MAP 6.1 NM</p>	<p>Knots 60 90 120 150 180</p> <p>Min:Sec 6:06 4:04 3:03 2:26 2:02</p>	

PALMDALE, CALIFORNIA

34°38'N-118°05'W

PALMDALE USAF PLANT 42 (KPMD)

Amdt 5 21JUN18

HI-ILS or LOC/DME RWY 25

SW-3, 03 DEC 2020 to 31 DEC 2020

SW-3, 03 DEC 2020 to 31 DEC 2020