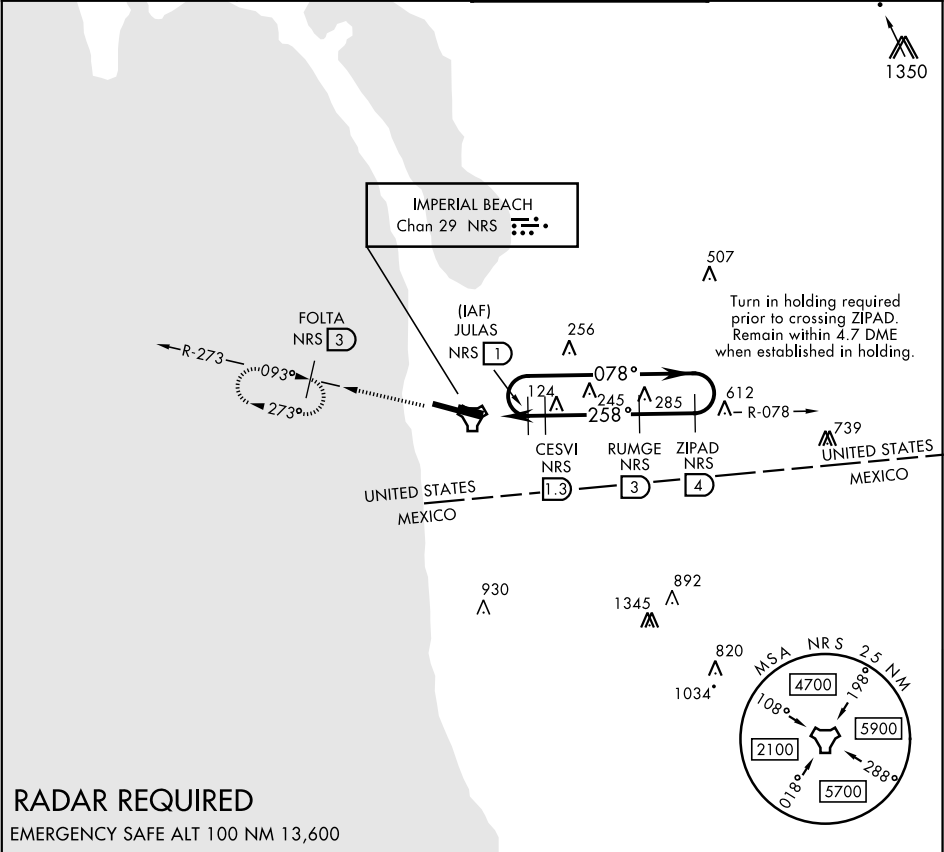


COPTER TACAN RWY 27

TACAN NRS Chan 29	APCH CRS 258°	Rwy ldg THRE 20 Arprt Elev 24
-------------------	---------------	-------------------------------

AL-307 [USN] IMPERIAL BEACH NOLF (REAM FIELD) (KNRS)

Max airspeed 90 KIAS.		MISSED APPROACH: Climb to 1600 via NRS TACAN R-078 to NRS, then via NRS R-273 to FOLTA, continue climb-in-hold to 1600. Remain within 5.2 DME when established in holding.	
ATIS ★ /ASOS 276.2	SOCAL APP CON 125.15 317.55	IMPERIAL BEACH TOWER ★ 120.65 239.25	GND CON 285.575



RADAR REQUIRED

EMERGENCY SAFE ALT 100 NM 13,600

JULAS R-078 1900 078° →

→ 258° ← ZIPAD R-078

RUMGE 4

1600

Remain within 4.7 DME

1600 NRS

NRS R-078

NRS R-273

TACAN

CISAV 5

CESVI 1.3

740

1600

VDA CESVI to thld 5.39° TCH 50

ELEV 24

THRE 20

CATEGORY COPTER

H-27 360-1 340 (400-1)

HIRL Rwy 9-27