

NOTE: RADAR required.

NOTE: RNAV 1.

NOTE: DME/DME/IRU or GPS required.

NOTE: Turbojet aircraft only.

NOTE: ZUUMA STAR used during LAX east traffic operations and noise abatement configuration 0000-0630 LCL.

NOTE: LAX traffic expect Rwy 6L unless otherwise assigned.

NOTE: If unable to meet speed restriction at ALMST, advise ATC on initial contact.

SOCAL APP CON
128.5 360.7
LOS ANGELES INTL D-ATIS ARR
133.8
SANTA MONICA MUNI ATIS
119.15
LOS ANGELES TOWER
(N) 133.9 239.3
(S) 120.95 379.1
SANTA MONICA TOWER ★
120.1 257.8

ARRIVAL ROUTE DESCRIPTION

BURGL TRANSITION (BURGL.ZUUMA3)

REBRG TRANSITION (REBRG.ZUUMA3)

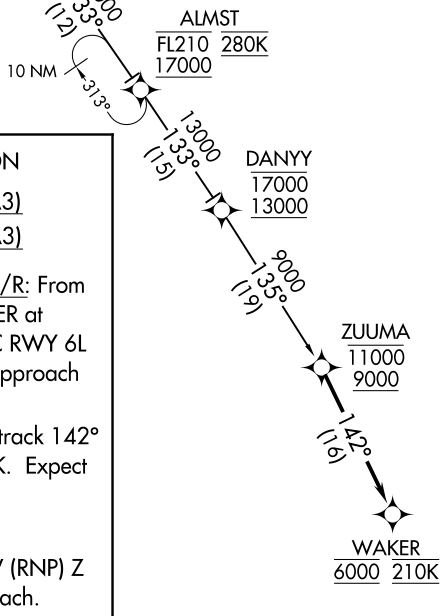
LANDING KLAX RUNWAYS 6L/R, 7L/R: From ZUUMA on track 142° to cross WAKER at 6000 and at 210K. Expect ILS or LOC RWY 6L approach or RADAR vectors to final approach course.

LANDING KSMO: From ZUUMA on track 142° to cross WAKER at 6000 and at 210K. Expect RNAV (GPS) RWY 3 approach.

LOST COMMUNICATIONS

LANDING LAX: Proceed on the RNAV (RNP) Z RWY 6L or ILS or LOC RWY 6L approach.

LANDING SMO: Proceed on the RNAV (GPS) RWY 3 approach.



SANTA
MONICA
MUNI

LOS
ANGELES
INTL

NOTE: Chart not to scale.