

TRTON TWO DEPARTURE (RNAV)

AL-237 (FAA)

LOS ANGELES INTL (LAX)
LOS ANGELES, CALIFORNIA

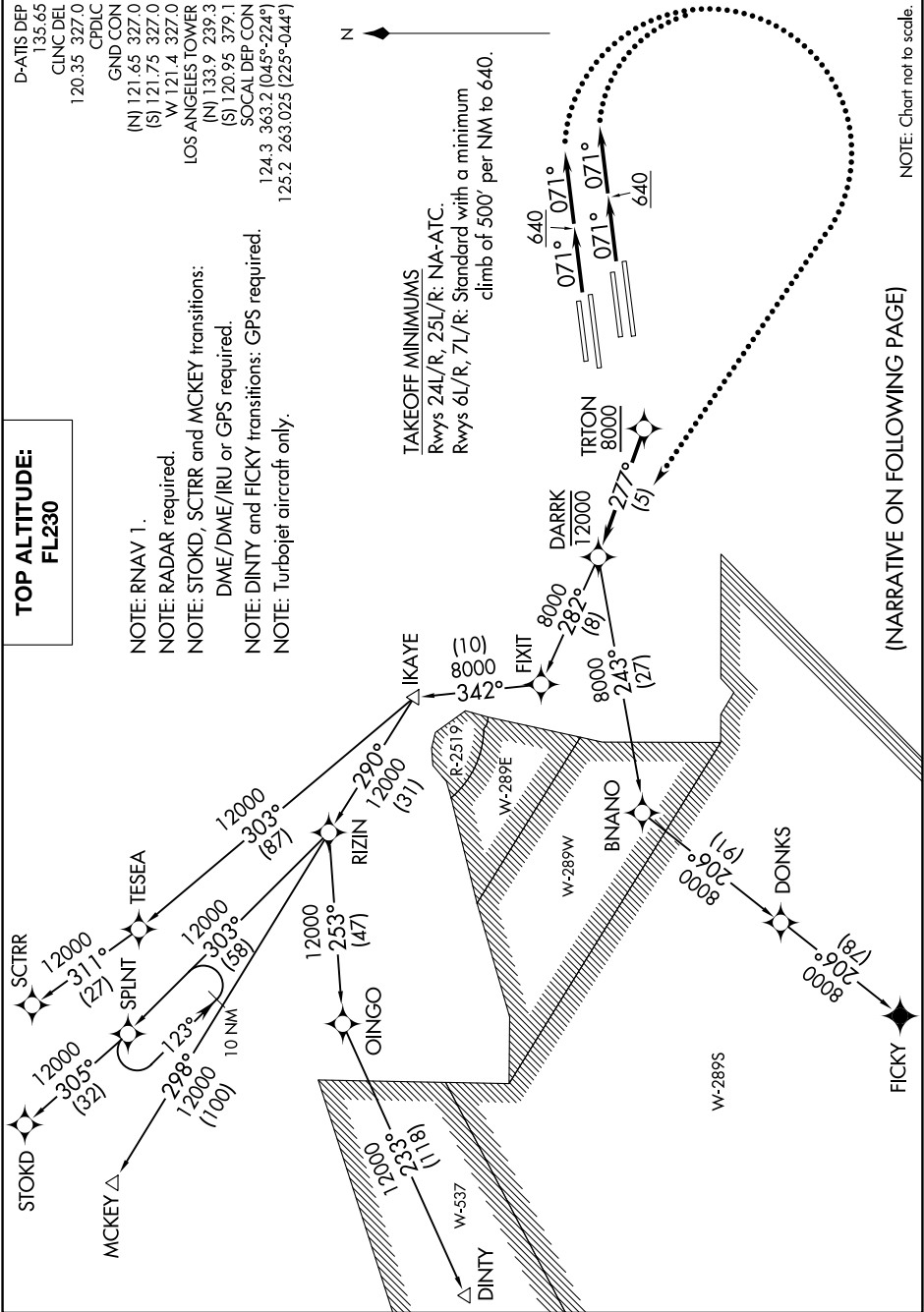
SW-3, 03 DEC 2020 to 31 DEC 2020

D-ATIS DEP 135.65
CLNC DEL 120.35 327.0
CPDLC
GND CON (N) 121.65 327.0
(S) 121.75 327.0
W 121.4 327.0
LOS ANGELES TOWER (N) 133.9 239.3
(S) 120.95 379.1
SOCAL DEP CON 124.3 363.2 (045°-224°)
125.2 263.025 (225°-044°)

TOP ALTITUDE:
FL230

NOTE: RNAV 1.
NOTE: RADAR required.
NOTE: STOKD, SCTRR and MCKEY transitions:
DME/DME/IRU or GPS required.
NOTE: DINTY and FICKY transitions: GPS required.
NOTE: Turbojet aircraft only.

TAKEOFF MINIMUMS
Rwys 24L/R, 25L/R: NA-ATC.
Rwys 6L/R, 7L/R: Standard with a minimum
climb of 500' per NM to 640.



(NARRATIVE ON FOLLOWING PAGE)

SW-3, 03 DEC 2020 to 31 DEC 2020

TRTON TWO DEPARTURE (RNAV)

LOS ANGELES, CALIFORNIA
LOS ANGELES INTL (LAX)