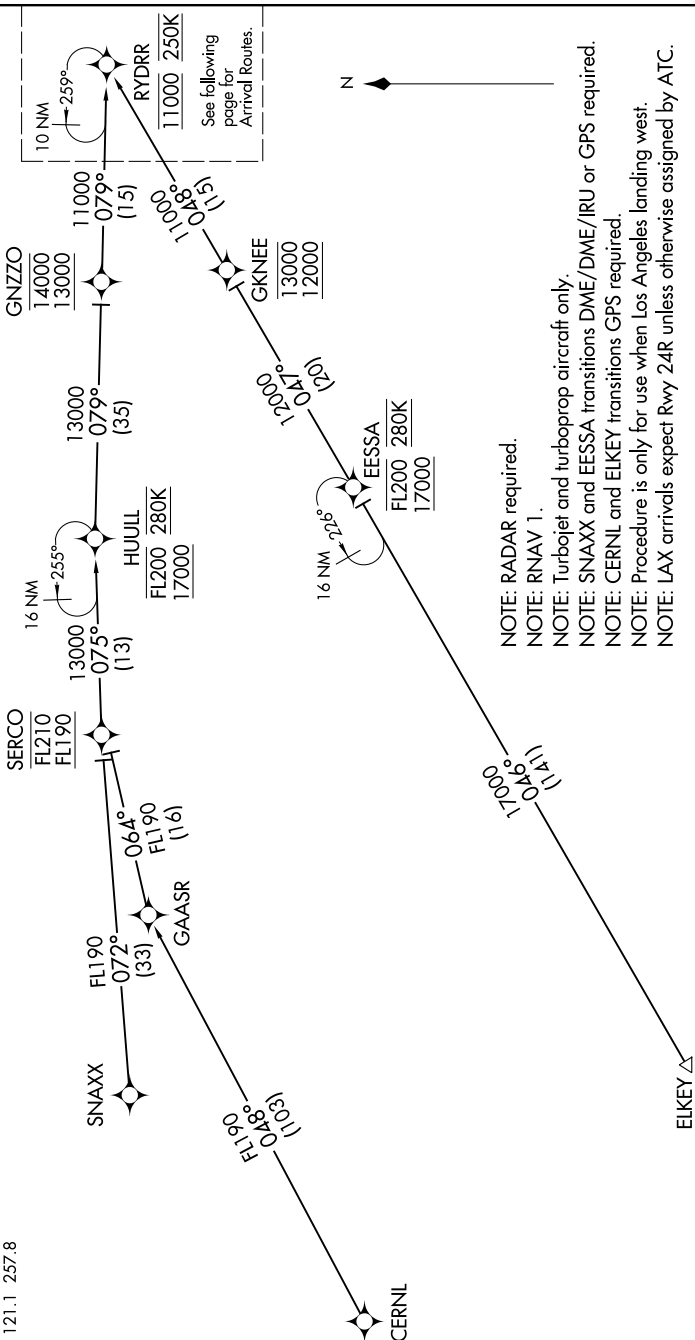


RYDRR TWO ARRIVAL (RNAV) Transition Routes

LOS ANGELES, CALIFORNIA

CERNL TRANSITION (CERNL.RYDRR2)
EESSA TRANSITION (EESSA.RYDRR2)
EIKEY TRANSITION (EIKEY.RYDRR2)
SNAXX TRANSITION (SNAXX.RYDRR2)

SOCIAL APP CON
 124.5 235.975
 LOS ANGELES INT
 133.8
 JACK NORTHURP
 118.4
 LOS ANGELES TO
 (N) 133.9 239.3
 (S) 120.95 379.1
 HAWTHORNE TO
 121.1 257.8



NOTE: RADAR required.

NOTE: RNAV 1.

NOTE: Turbojet and turboprop aircraft only.

NOTE: SNAXX and EESSA transitions DME/DME/IRU or GPS required.

NOTE: CERNL and ELKEY transitions GPS required.

NOTE: Procedure is only for use when Los Angeles landing west.

NOTE: LAX arrivals expect Rwy 24R unless otherwise assigned by ATC.

(CONTINUED ON FOLLOWING PAGE)

NOTE: Chart not to scale.

RYDRR TWO ARRIVAL (RNAV) Transition Routes

LOS ANGELES, CALIFORNIA