


WAAS CH <b>42504</b> <b>W07A</b>	APP CRS <b>071°</b>	Rwy Idg <b>11259</b> TDZE <b>128</b> Apt Elev <b>128</b>
--	------------------------	--

RNAV (GPS) Y RWY 7L  
LOS ANGELES INTL (LAX)

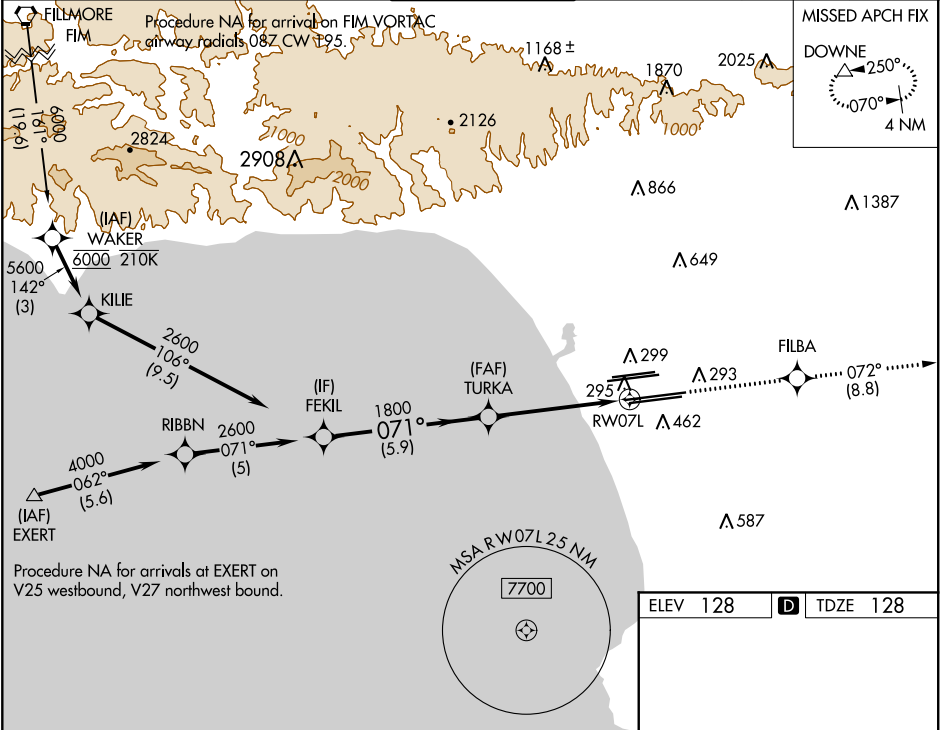
**▽** For uncompensated Baro-VNAV systems, LNAV/VNAV NA below 5°C (41°F) or above 54°C (130°F). DME/DME RNP -0.3 NA. LNAV procedure NA during simultaneous operations. Use of FD or AP providing RNAV track guidance required during simultaneous operations. Simultaneous approach authorized.

MALSR

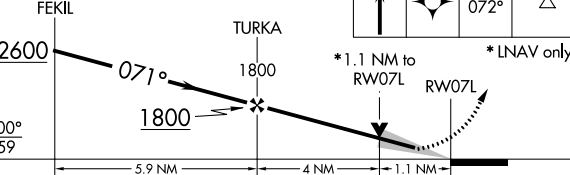


MISSED APPROACH: Climb to 3000 direct FILBA and on track 072° to DOWNE and hold.

D-ATIS ARR <b>133.8</b> DEP <b>135.65</b>	SOCAL APP CON <b>124.3 363.2</b> (APCH FM WEST) <b>124.5 235.975</b> (225°-044°) <b>124.9 269.0</b> (090°-224°) <b>128.5 360.7</b> (045°-089°)	LOS ANGELES TOWER <b>N 133.9 239.3</b> <b>S 120.95 379.1</b>	GND CON <b>N 121.65 327.0</b> <b>S 121.75 327.0</b> <b>W 121.4 327.0</b>	CLNC DEL <b>120.35</b> <b>327.0</b>	CPDLC
---	--	--	---	---	-------

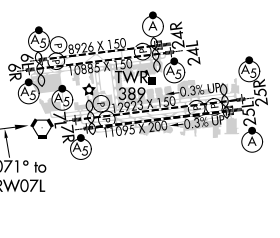


VGSI and RNAV glidepath not coincident (VGSI Angle 3.00/TCH 83).



CATEGORY	A	B	C	D
LPV DA	344/18 216 (300-½)			
LNAV/VNAV DA	464/30 336 (400-¾)			
LNAV MDA	560/24 432 (500-½)		560/40 432 (500-¾)	

TDZ/CL Rwy's 6R, 7L, 24R, and 25L  
HIRL all Rwy's



SW-3, 03 DEC 2020 to 31 DEC 2020

SW-3, 03 DEC 2020 to 31 DEC 2020