

WAAS CH <b>82507</b> <b>W06A</b>	APP CRS <b>071°</b>	Rwy Idg <b>8566</b> TDZE <b>119</b> Apt Elev <b>128</b>
--	------------------------	---

RNAV (GPS) Y RWY 6L

LOS ANGELES INTL (LAX)

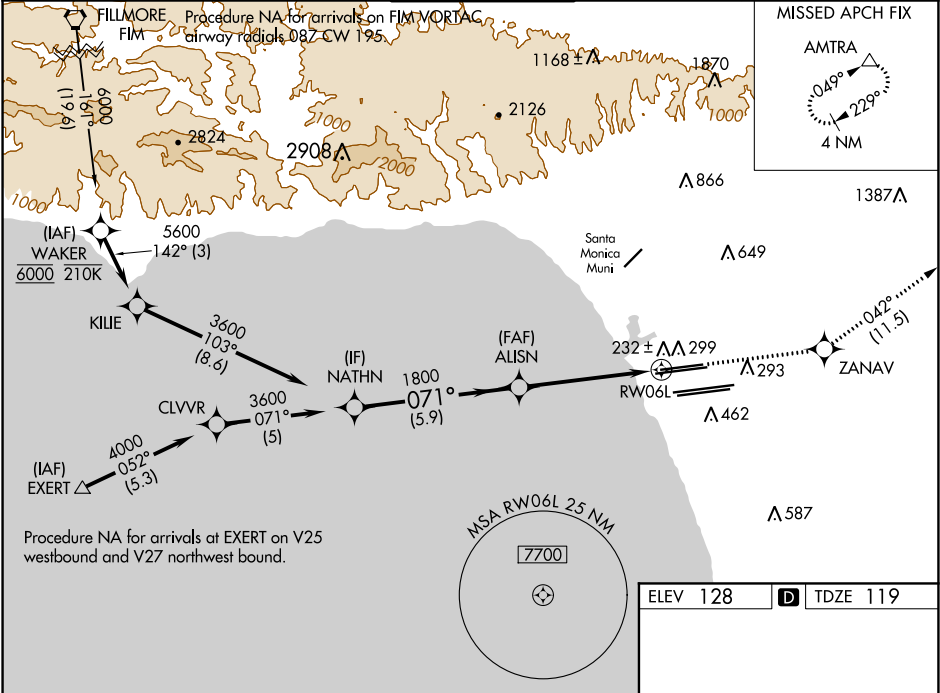
▼

For uncompensated Baro-VNAV systems, LNAV/VNAV NA below 5°C (41°F) or above 54°C (130°F). DME/DME RNP-0.3 NA. LNAV procedure NA during simultaneous operations. Use of FD or AP providing RNAV track guidance required during simultaneous operations. Simultaneous approach authorized.

MALSR

MISSED APPROACH: Climb to 3000 direct ZANAV and track 042° to AMTRA and hold.

D-ATIS ARR <b>133.8</b> DEP <b>135.65</b>	SOCAL APP CON <b>124.3 363.2 124.9 269.0</b> (APCH FM WEST) (090°-224°) <b>124.5 235.975 128.5 360.7</b> (225°-044°) (043°-089°)	LOS ANGELES TOWER <b>N 133.9 239.3</b> <b>S 120.95 379.1</b>	GND CON <b>N 121.65 327.0</b> <b>S 121.75 327.0</b> <b>W 121.4 327.0</b>	CLNC DEL <b>120.35 327.0</b>	CPDLC
---	--	--	---	---------------------------------	-------



VGSI and RNAV glidepath not coincident  
(VGSI Angle 3.00/TCH 77).

3000 ZANAV

tr 042°

AMTRA

071° to RW06L

\* INAV only

\* 1 NM to RW06L

RW06L

GP 3.00°  
TCH 55

3600

071°

1800

5.9 NM

4.1 NM

1 NM

CATEGORY

A

B

C

D

LPV DA

369/24

250 (300-½)

LNAV/VNAV DA

411/24

292 (300-½)

LNAV MDA

500/24

381 (400-½)

500/35

381 (400-½)

TDZ/CL Rwy 6R, 7L, 24R, and 25L  
HIRL all Rwy