

WAAS CH 49007 W25B	APP CRS 251°	Rwy Idg 11134 TDZE 104 Apt Elev 128
--	------------------------	--

RNAV (GPS) Y RWY 25R

LOS ANGELES INTL (LAX)

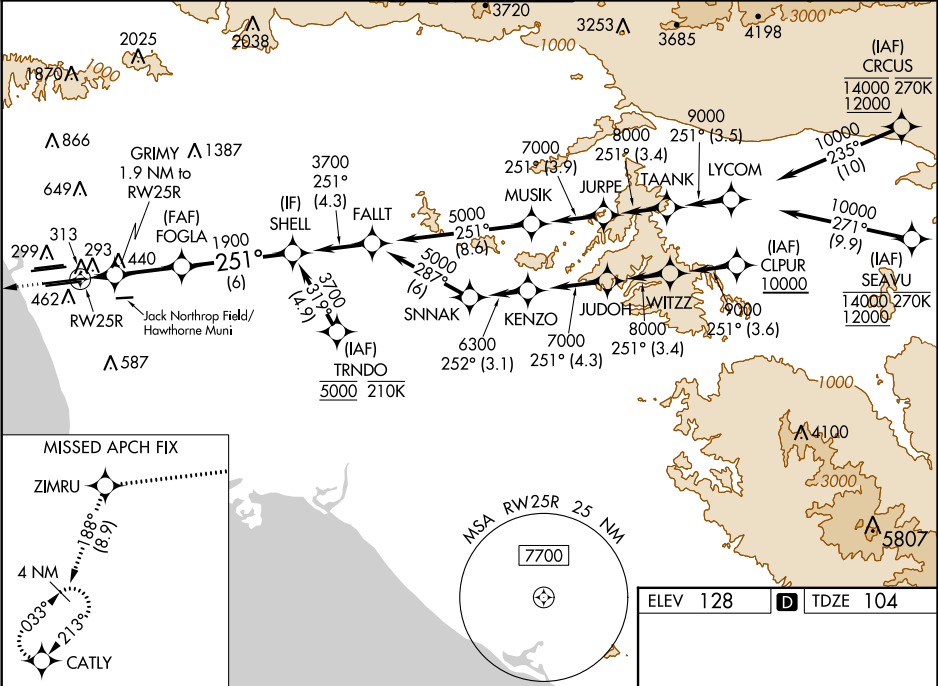
For uncompensated Baro-VNAV systems, LNAV/VNAV NA below 5°C (41°F) or above 54°C (130°F). DME/DME RNP-0.3 NA. Simultaneous approach authorized. Simultaneous approach authorized with HHR. LNAV procedure NA during simultaneous operations. Use of FD or AP providing RNAV track guidance required during simultaneous operations. # RVR 1800 authorized with use of FD or AP or HUD to DA.

MALSR

MISSED APPROACH:

Climb to 2000 direct ZIMRU and track 188° to CATLY and hold.

D-ATIS ARR 133.8 DEP 135.65	SOCAL APP CON 124.3 363.2 124.9 269.0 (APCH FM WEST) (090°-224°) 124.5 235.975 128.5 360.7 (225°-044°) (045°-089°)	LOS ANGELES TOWER N 133.9 239.3 S 120.95 379.1	GND CON N 121.65 327.0 S 121.75 327.0 W 121.4 327.0	CLNC DEL 120.35 327.0	CPDLC
---	--	--	---	---------------------------------	-------



2000

ZIMRU

tr 188°

CATLY

VGSI and RNAV glidepath not coincident (VGSI Angle 3.00/TCH 75).

FOGLA

3700

251°

1900

740*

GP 3.00° TCH 54

* LNAV only

RW25R

GRIMY 1.9 NM to RW25R

FOGLA

SHELL

1.9 NM

3.6 NM

6 NM

CATEGORY	A	B	C	D
LPV DA#	304/24	200 (200-½)		
LNAV/VNAV DA	578/60	474 (500-¼)		
LNAV MDA	640/24	536 (600-½)	640/55	536 (600-1)

TDZ/CL Rwy 6R, 7L, 24R, and 25L

HIRL all Rwy's