
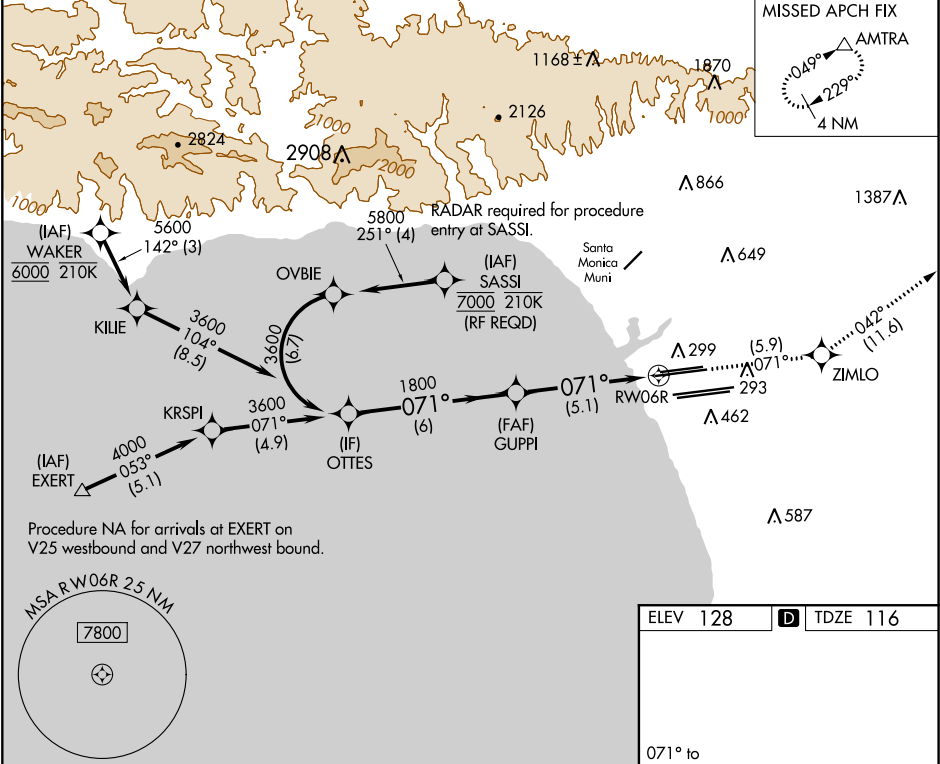



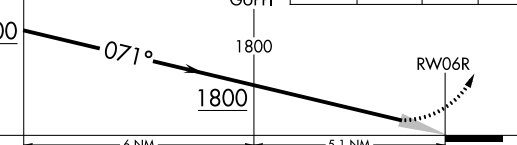
APP CRS	Rwy Idg	9748
071°	TDZE	116
	Apt Elev	128

RNAV (RNP) Z RWY 6R  
LOS ANGELES INTL (LAX)

<p>For uncompensated Baro-VNAV systems, procedure NA below 5°C (41°F) or above 54°C (130°F). GPS required. Simultaneous approach authorized. For inop ALS, increase RNP 0.30 all Cats visibility to RVR 6000.</p>	<p>MALSR</p> 	<p>MISSED APPROACH: Climb to 3000 on track 071° to ZIMLO and on track 042° to AMTRA and hold.</p>
---	--	---

D-ATIS ARR 133.8 DEP 135.65	SOCAL APP CON 124.3 363.2 (APCH FM WEST) 124.5 235.975 (225°-044°)	124.9 269.0 (090°-224°) 128.5 360.7 (045°-089°)	LOS ANGELES TOWER N 133.9 239.3 S 120.95 379.1	GND CON N 121.65 327.0 S 121.75 327.0 W 121.4 327.0	CLNC DEL 120.35 327.0	CPDLC
-----------------------------------	--	--	--	--	-----------------------------	-------



VGSi and RNAV glidepath not coincident (VGSi Angle 3.00/TCH 69).		3000 ↑ tr 071°	ZIMLO ✦	tr 042°	AMTRA △	
OTTES	GUPPI					
GP 3.00° TCH 53		6 NM				
CATEGORY		A	B	C	D	
RNP 0.30 DA		471/40 355 (400-¾)				
AUTHORIZATION REQUIRED						
TDZ/CL Rwy 6R, 7L, 24R, and 25L HIRL all Rwy's						