

APP CRS	Rwy Idg	11095
251°	TDZE	104
	Apt Elev	128

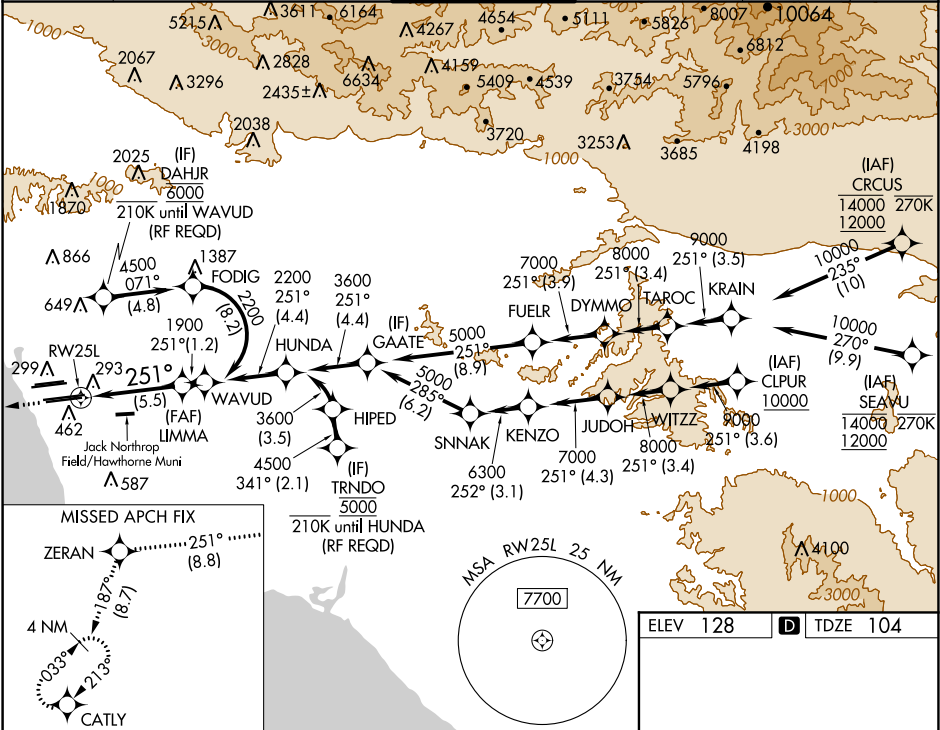
RNAV (RNP) Z RWY 25L
LOS ANGELES INTL (LAX)

For uncompensated Baro-VNAV systems, procedure NA below 5°C (41°F) or above 54°C (130°F).
GPS required. Simultaneous approach authorized.
Simultaneous approach authorized with HHR.

ALSIF-2

MISSED APPROACH: Climb to 2000 on track 251° to ZERAN and on track 187° to CATLY and hold.

D-ATIS	SOCAL APP CON	LOS ANGELES TOWER	GND CON	CLNC DEL	CPDLC
ARR 133.8	124.3 363.2	N 133.9 239.3	N 121.65 327.0	120.35	
DEP 135.65	124.5 235.975	S 120.95 379.1	S 121.75 327.0	327.0	
	(225°-044°)	(090°-224°)	W 121.4 327.0		
		(045°-089°)			



2000

tr 251°

ZERAN

tr 187°

CATLY

See planview for multiple IF locations.

VGSI and RNAV glidepath not coincident.
(VGSI Angle 3.00/TCH 70).

WAWUD

LIMMA

1900

251°

2200

1900

GP 3.00°

TCH 54

5.5 NM

1.2 NM

CATEGORY	A	B	C	D
RNP 0.15 DA	445/30 341 (400-%)			
RNP 0.30 DA	543/50 439 (500-1)			

AUTHORIZATION REQUIRED

ELEV 128

TDZE 104