

APP CRS	Rwy Idg	8926
251°	TDZE	122
	Apt Elev	128

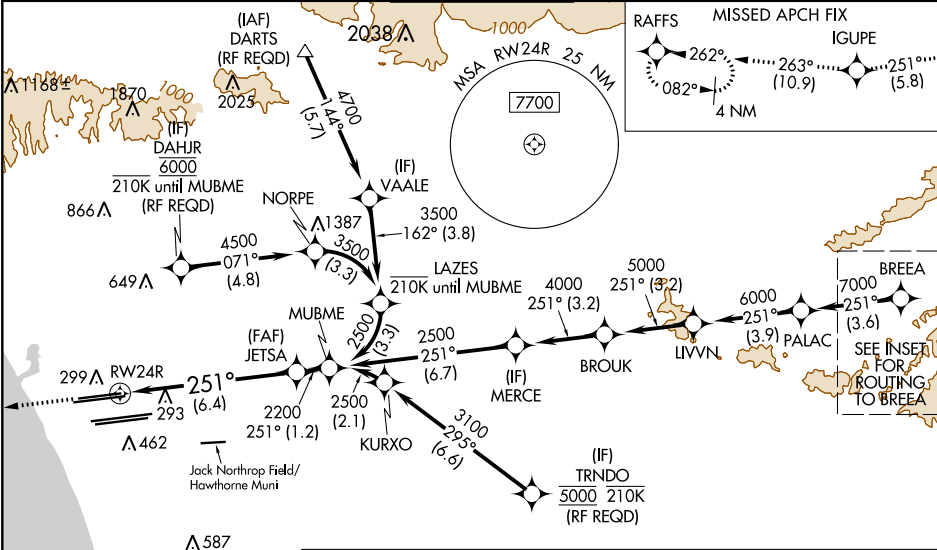
RNAV (RNP) Z RWY 24R
LOS ANGELES INTL (LAX)

⚠ For uncompensated Baro-VNAV systems, procedure NA below 5°C (41°F) or above 54°C (130°F). GPS required. For inop ALS, increase RNP 0.15 all Cats visibility to RVR 6000 and RNP 0.30 all Cats visibility to 1 1/2 SM. Simultaneous approach authorized. Simultaneous approach authorized with HHR.

ALSIF-2

MISSED APPROACH: Climb to 2000 on track 251° to IGUPE and on track 263° to RAFFS and hold.

D-ATIS	SOCAL APP CON	LOS ANGELES TOWER	GND CON	CLNC DEL	CPDLC
ARR 133.8	124.3 363.2	N 133.9 239.3	N 121.65 327.0	120.35	
DEP 135.65	124.5 235.975	S 120.95 379.1	S 121.75 327.0	327.0	
	(225°-044°)	(090°-224°)	W 121.4 327.0		
		(045°-089°)			



ELEV 128

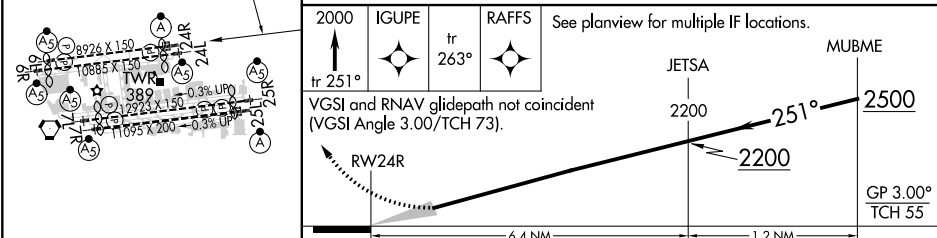
D

TDZE 122

ROUTING TO BREA (not to scale)

BREA 8000 251° (3.6) → DECOR 9000 251° (3.6) → SKOLL 10000 241° (10.4) → CRCUS 14000 270K 12000 → SEAVU 14000 270K 12000

IF locations: (IAF) CRCUS, (IAF) SEAVU



CATEGORY	A	B	C	D
RNP 0.15 DA		484/40	362 (400-3/4)	
RNP 0.30 DA		586/60	464 (500-1 1/4)	

AUTHORIZATION REQUIRED